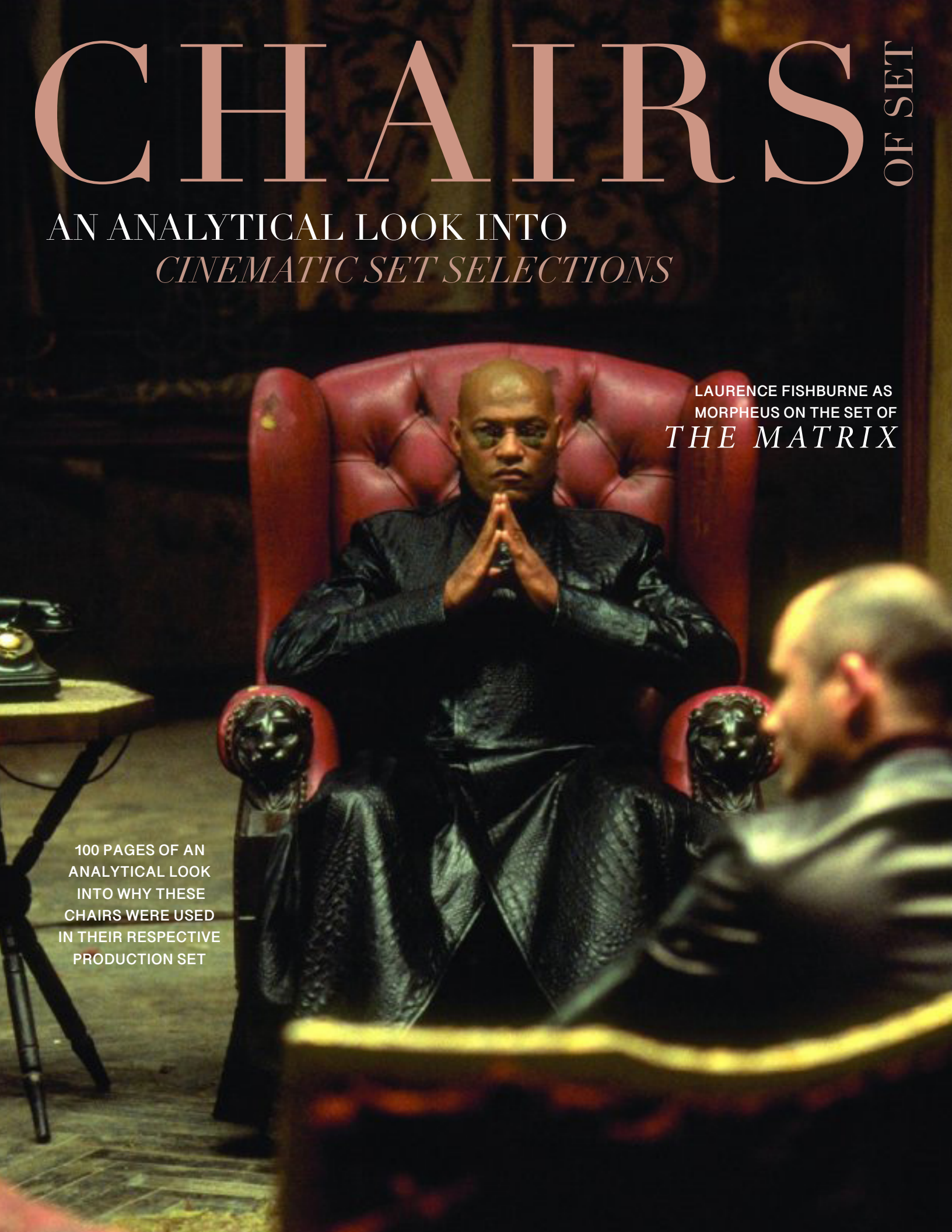


CHAIRS OF SET

AN ANALYTICAL LOOK INTO
CINEMATIC SET SELECTIONS

LAURENCE FISHBURNE AS
MORPHEUS ON THE SET OF
THE MATRIX

100 PAGES OF AN
ANALYTICAL LOOK
INTO WHY THESE
CHAIRS WERE USED
IN THEIR RESPECTIVE
PRODUCTION SET



F O R

A precedent is something that came before. Every furniture piece used in the world today is here due to something that came before it, and therefore based on a precedent. Whether the precedent was used as inspiration or as an additive or subtractive starting point, replicated there is always a reason and a precedent. When it comes to set design, choosing a piece that fits historically with the time period that the film is set in and carries additional, often subliminal, plot-related meaning is crucial. While all furniture has precedents, chairs are among the most recognizable, especially when used in film and TV sets. Studies have shown that there is a positive correlation between award-winning set/production design and higher audience scores.

W A R D

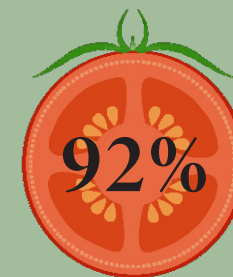
How a film is perceived and performs coincides with the ability to make the audience feel as though they're immersed in a world that isn't their own—through excellence in set design, which involves a deep understanding of precedence. Often the set becomes the silent character in the film or show. The purpose of this research is to analyze iconic set design through the lens of precedent, considering why the director and set/production designer made the choices they did. This research is grounded in auteur theory, which posits that the director is the auteur (major creative force) of the film output, and the set/production designer is the auteur of the physical (set) output; both auteurs exercise agency over choice of precedent and layers of meaning ascribed to the scenes and the set.

WHAT'S THE DEAL,

On every single spread, you will see a rotten tomatoes rating somewhere on the page, which is based on the audience ratings of the movie or show. The average rotten tomatoes score by the audience in 2019 was 62%, and anything under 60% is considered “rotten”. How a film is perceived and performs coincides with its ability to make the audience feel as though they’re immersed in a world that isn't their own. Through being immersed, the set design speaks further about what the actors can’t express. Set and production designers have the ability to make or break movies, and most, if not all, of the highest-grossing movies have had a recognized and talented designer. Rick Carter, Roy Walker, John DeCuir, and Dean Tavoularis, whose works include iconic films like “Back to the Future II and III,” “The Shining,” “Ghostbusters,” and “The Godfather,” respectively, further solidify their pivotal role in cinematic history. Many of these films are not only commercial successes but also hold esteemed positions on IMDb’s top 250 movie list, as revered by viewers worldwide.

WITH ROTTEN TOMATOES?

**Rotten
Tomatoes**
AUDIENCE SCORE



There are a few movies and shows throughout the magazine that are rated lower than 60%. This text will be next to the tomato:

**THIS MOVIE IS CONSIDERED ROTTEN! TAKE NOTE
OF THAT IN REGARD TO CHOICE OF SET DESIGN.**

Take a note of those, and think about if the chair fit the set well or not, as there's a combination of reasons it wasn't recieved well by viewers.

TABLE OF

8-9.....	THE GOLDEN GIRLS
10-11.....	YOU ONLY LIVE TWICE
12-13.....	LEGALLY BLONDE
14-15.....	MEN IN BLACK
16-17.....	JOHN WICK 4
18-19.....	THE MATRIX
20-21.....	THE FLIGHT ATTENDANT
22-23.....	GLASS ONION
24-25.....	NAPOLEON DYNAMITE
26-27.....	MAD MEN
28-29.....	GOSSIP GIRL
30-31.....	A SPACE ODYSSEY
32-33.....	IRON MAN 2
34-35.....	HOUSE OF GUCCI
36-37.....	TWO AND A HALF MEN
38-39.....	SHERLOCK HOLMES
40-41.....	MARS ATTACKS!
42-43.....	BARB & STAR GO TO VISTA DEL MAR
44-45.....	BARBIE
46-47.....	AMERICAN PSYCHO
48-49.....	DON'T WORRY DARLING
50-51.....	STRANGER THINGS
52-53.....	THE DEVIL WEARS PRADA
54-55.....	WHITE WATER SUMMER

CHAIRS

56-57.....	NORMAL PEOPLE
58-59.....	BLACK MIRROR: BANDERSNATCH
60-61.....	THE HOLIDAY
62-63.....	X-MEN
64-65.....	THE FATHER
66-67.....	BEYOND THE BLACK RAINBOW
68-69.....	HOW DO YOU KNOW
70-71.....	LA LA LAND
72-73.....	THE INCREDIBLES
74-75.....	AUSTIN POWERS
76-77.....	ZOOLANDER
78-79.....	GONE WITH THE WIND
80-81.....	TAR
82-83.....	NO TIME TO DIE
84-85.....	PROMISING YOUNG WOMAN
86-87.....	BROKEN EMBRACES
88-89.....	SUCCESSION
90-91.....	THE SPY WHO LOVED ME
92-93.....	SUITS
94-95.....	A CLOCKWORK ORANGE
96-97.....	STAR TREK
98-99.....	INCEPTION
100-101.....	PASSENGERS
102-103.....	TOY STORY
104-105.....	ABOUT THE AUTHOR



The Golden Girls

Pink Shell Armchair

Hans. J Wegner

From the episode “BEAUTY AND THE BEAST”,

on the set of The Golden Girls, production designer Ed Stephson was the mastermind behind the room that was uniquely Blanche’s. Blanche is known for being quite the promiscuous woman, so it’s only fitting that a staple, the 80s pink shell armchair, is placed on set. This pink bomb is perfect for the statement that Blanche is, and adds curvilinear lines to soften the louder theme which her room carries. Hans. J Wegner was the first initially to create the concept of a “shell” chair, thus becoming a precedent for the chair pictured above today.



Blanche’s Boudoir

Blanche Devereaux, played by Rue McClanahan, was definitely the most promiscuous of the bunch, and it no doubt shows through her vibrant yet encapsulating bedroom that everyone recognizes.



**Rotten
Tomatoes**
AUDIENCE SCORE

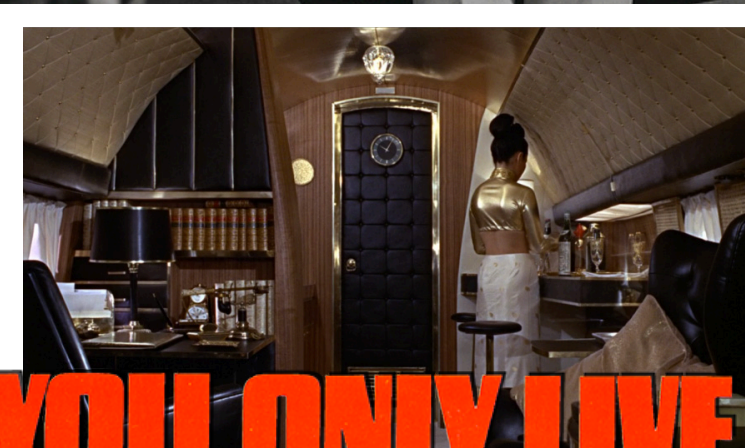
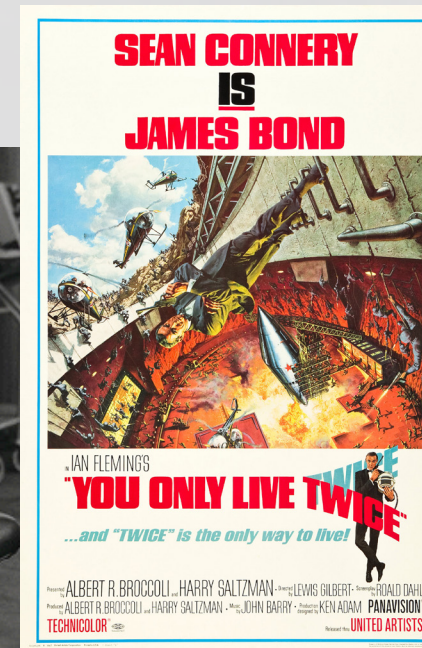




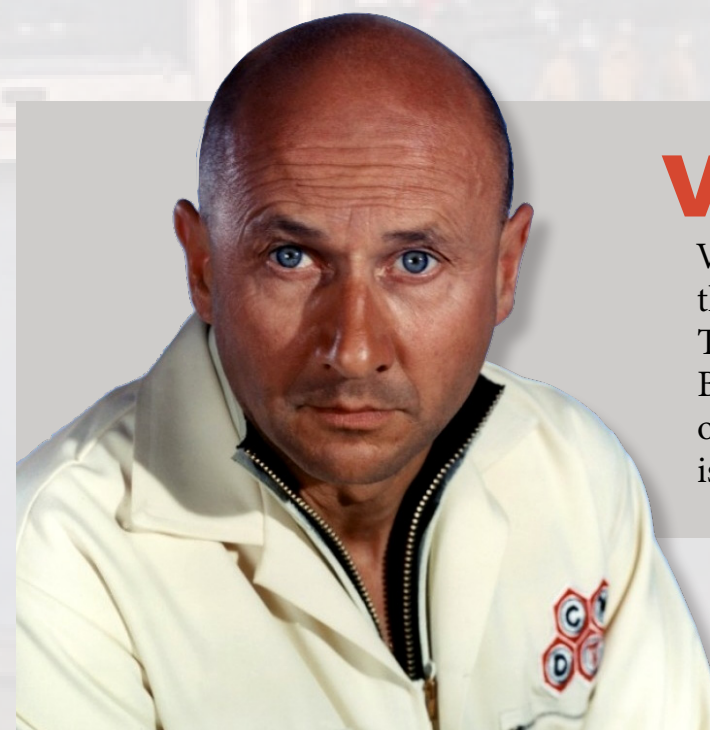
BLOFELD G PLAN

The production designer, Ken Adam, did a phenomenal job at portraying the actors through their choice of decor. Something about the Blofeld chair just screams evil. Right? It perfectly matches the narrative of Ernst Stavro Blofeld in the James Bond series, who's role is a criminal mastermind with the hopes of eventual world domination. The structure of this chair almost envelops the user entirely, allowing for the individual to slowly turn around ominously

**Rotten
Tomatoes**
AUDIENCE SCORE



"YOU ONLY LIVE TWICE"



Villian Blofeld's Lair

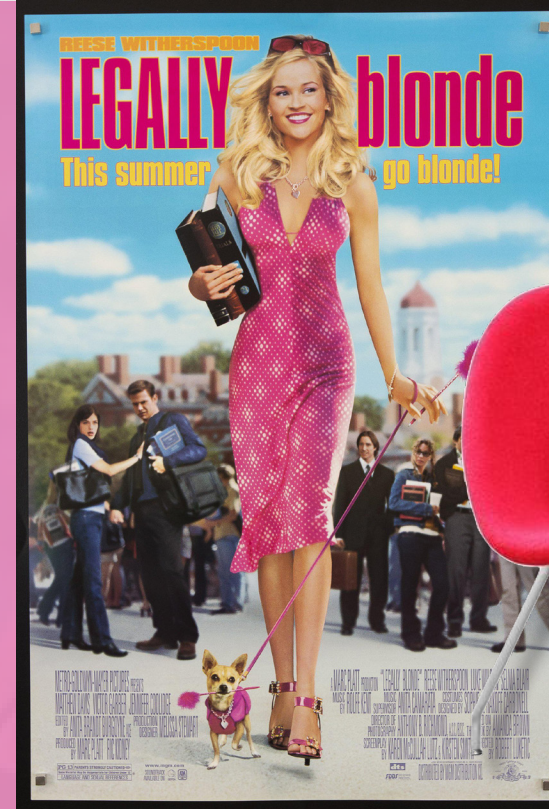
Villian Blofeld, played by Donald Pleasence, is the evil mastermind behind anything villainous. The famous archenemy of the notorious James Bond, he's the founder of the global terrorist organization SPECTRE. Which, of course their goal is to take over the world. What else would it be?



LEGALLY blonde

Elle's Room

Elle Woods, played by Reese Witherspoon, is no short of being the typical bubbly sorority girl from California. So when we find out not only is her dorm room entirely pink, but her Harvard dorm too - no one is surprised.



Rotten Tomatoes
AUDIENCE SCORE



WOMB chair

EERO saarinen

From the 2001 movie called *Legally Blonde*, scenic designer David Rockwell fit the pieces of this bombshell's room together. Lawyer by day, but still a sorority girl at heart, Elle never lost her love for pink. So, it's only fitting that the Eero Saarinen Style Womb Chair is placed in the corner for her leisurerly pleasure. It captures her bubble, fun, and unique personality, seeing how positive her outlook is on the world.



MIB's HQ

Agent J, played by Will Smith, is the protagonist in this film. Although it may seem like an ordinary building from the outside, the MIB is anything but. Welcome to the world of zapping memories due to alien encounters. Yes - you heard me right.

MIB

MEN IN BLACK

OVALIA EGG CHAIR

HENRIK THOR-LARSEN

Production designers Bo Welch and Cheryl A. Carasik were the minds behind the set of *Men In Black*. The chair, designed by Henrik Thor-Larsen, was first displayed in 1968. Many notice its striking resemblance to Eero Aarnio's Ball Chair, although with further understanding of the unique qualities from both - it's clear the two chairs are from two different creators. The concept of the movie is the fight against aliens, however is set in the 1960s as that's when the MIB organization was formed. See how this all correlates now? Directing the film with an intent for everything to take place during a specific period makes the film all more believable and authentic. This chair captures the futuristic feel of the headquarters, while still carrying the narrative that it was 29 years old when the film was released.

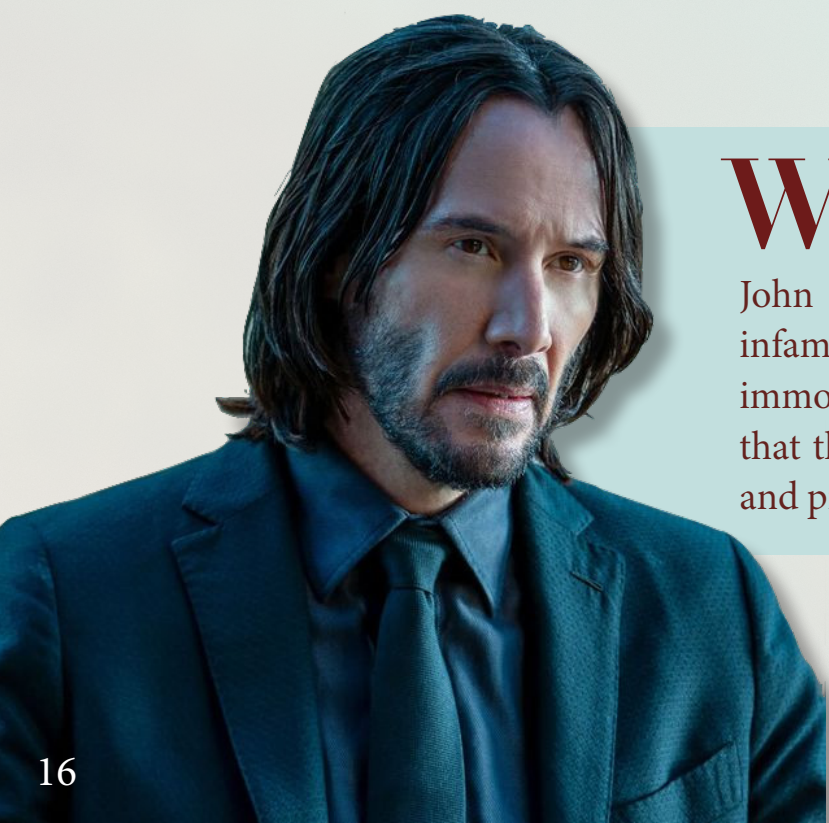


**Rotten
Tomatoes**
AUDIENCE SCORE



JOHN WICK 4

CHAPTER



Wick's Battle

John Wick, played by Keanu Reeves, is the infamous assassin known to practically be immortal due to his skill. So, it's only fitting that the chairs he sits in are of upmost quality and prowess - he wouldn't expect anything less.



**Rotten
Tomatoes**
AUDIENCE SCORE



WALNUT SAVANAROLA ARM CHAIR

JOHANNES (JOHN) KIRCHMAYER

Production designer, Kevin Kavanaugh, was the responsibility for creating the incredible sets throughout *John Wick 4*. This last scene pictured to the left is one of the most heated scenes in the movie, even though all they're doing is sitting there. I won't spoil anything of course, but what's being talked about is what the movie has led up to. It's only fitting that the furniture decorating the space has this "You may think it's the end of the line for me, but I know it's not" feeling. These chairs Reeves and Skarsgård evoke this sense of power and hostility, all while still holding an elegance and rich posture.





THE MATRIX

Morpheus' Lair

Morpheus, who's played by Laurence Fishbourne, is the all-knowing intelligent guide who introduces Neo to the unknown, holds all of the power in this fictional reality. It's only fitting that his chair matches exactly how he's supposed to be portrayed.



RED LEATHER WINGBACK

Owen Paterson, the production designer, is responsible for the set design work of the entire Matrix series. This movie has a very heavy and anxious setting, knowing that according to some this could potentially be our reality...but there's no way..right? Morpheus, the selfless leader who believes that Neo is the One, guides Neo throughout his trials and tribulations in learning to believe in himself. Morpheus holds immense power in this world, for the greater good. The red leather wingback is the only proper way to exemplify the intimidating qualities and stature he carries.

Rotten Tomatoes
AUDIENCE SCORE



MATRIX



THE FLIGHT ATTENDANT



Annie's Apartment

Annie Mouradian, played by Zosia Mamet, is the best friend you could ever ask for to her best friend, Cassandra Bowden (the protagonist), played by Haley Cuoco. Through the thickest and thin, Annie never leaves her side.

**Rotten
Tomatoes**
AUDIENCE SCORE



ELROY RIGHT ARM CHAIR

MITCHELL GOLD & BOB WILLIAMS

Production designer, Sara K White, put together the lovely sets of each character throughout the two seasons of this show. We get to follow both the world of Cassandra Bowden through a gigantic series of messes that she has entirely inflicted up on herself, and her best friend Annie. Annie, who's occupation is a brass tacks lawyer, translates to her apartment being polished, refined, and rich, a lot more put together than Bowden's. The Elroy Right Arm chair is all of those words above, and a representation of Annie's calm and positive attitude with its curvilinear line swooping upwards.





Glass Onion

a
Knives Out
mystery

A Luxury Plot Twist Central

Daniel Craig, played by Benoit Blanc, is the detective and series protagonist in this sequel to the movie, *Knives Out*. Craig's unpredictable and spontaneous nature, similar to the vibe of the entire movie, only matches the design for furniture pieces that represent those qualities to make an appearance in the film.



**Rotten
Tomatoes**
AUDIENCE SCORE



Bloom Chair Kenneth Cobonpue

The main portion of the movie takes place on Miles Bron's (played by Edward Norton) villa on a private island in Greece. Production designer, Rick Heinrichs, stated his motivation for the design was to essentially make it an over-exaggerated version of how Miles perceives himself. Before the main set is on screen though, we get shots of all the characters living their lives before being brought together on the island. One of which is a fancy house party, where the Bloom chair, designed by Kenneth Cobonpue, gets a cameo. This movie is entirely full of twists, turns, and anticipation, leaving this chair to be the perfect break in visuals with its unique demeanor and stature.



Folding Chair *John Cram*

The Folding chair is not simply one that has one creator, and the history for this piece goes way back. The Chinese folding stool dates back to 206 B.C., however John Cram was the first to have a patent on record for this type of chair. It's highly likely there were other names before Cram, however his is the earliest record on file from 1855. Nathaniel Alexander came next, although arguably he is who's most known for creating the chair due to his version being the first that was convenient. Production designer, Cory Lorenzen, knew the perfect pieces to add to this goofy movie's set. It's interesting that one of the most average looking chairs has some of the richest history, really tying in both the charm of the movie seemingly being stuck in the past, and the monotonous attitude of Napoleon.



Napoleon Dynamite



The Dynamite Residence

Napoleon Dynamite, played by Jon Heder, is no doubt one of the most iconic characters in cinema. The movie takes place in 2004, however the set design has pieces that were common in the 80s and 90s. The entire town they live in looks like it's stuck in the 80s, giving the movie that comfort and charm.



**Rotten
Tomatoes**
AUDIENCE SCORE



EAMES EXECUTIVE CHAIR

HERMAN MILLER

The Eames Executive chair, made by Herman Miller, is one that speaks business, lounge, conference, high-performance, and sleek. Production designer, Dan bishop, knew just how to emit the stressful and vital importance that the ad business was experiencing during this period, and did so through the perfect utilization of

office furniture. It also gives not everything is as it seems to feel, due to the fact that Draper's actions (along with the scandals businesses have in general) were not always with good intentions.

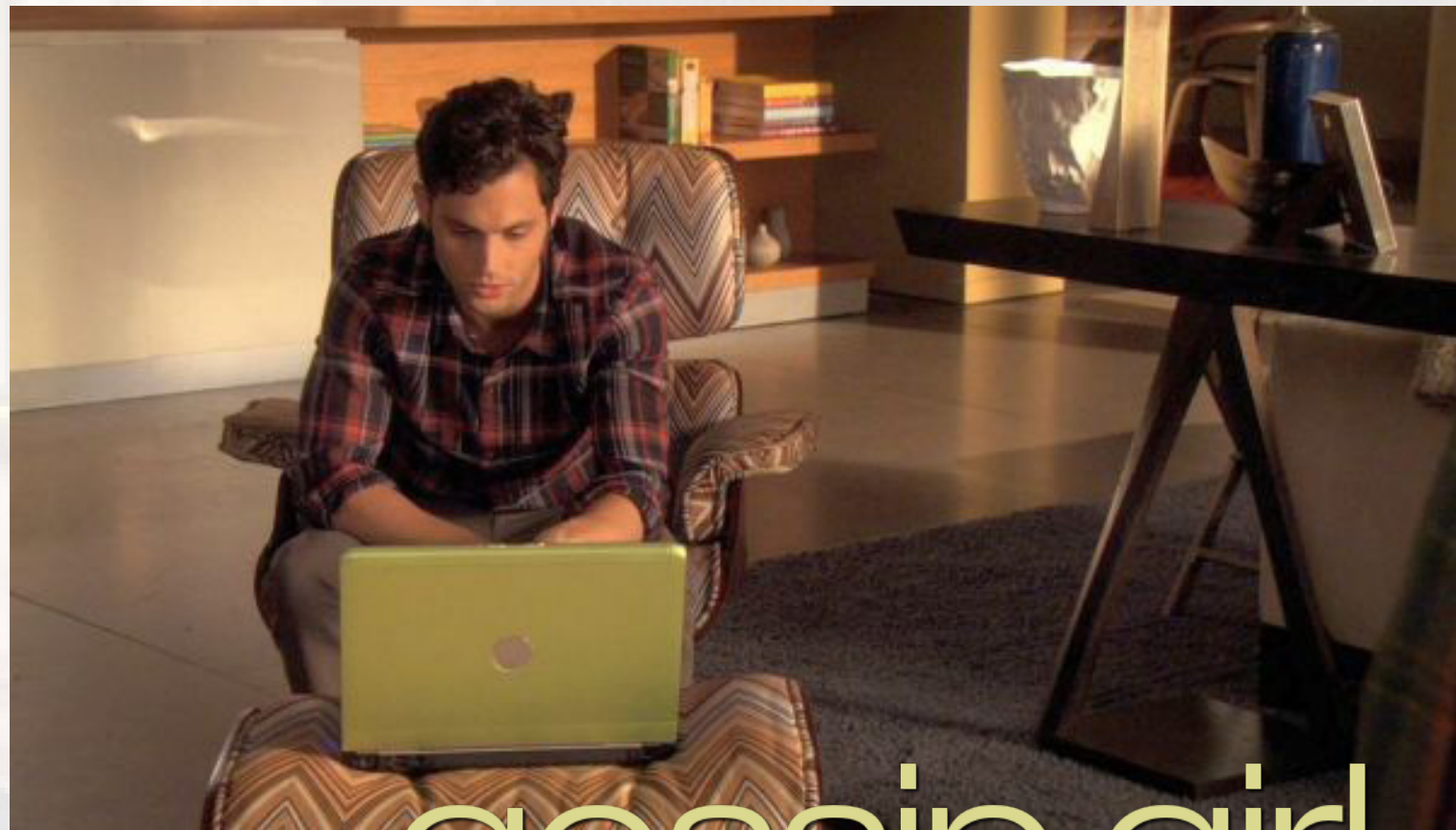


MAD MEN

Dashing in Draper

Don Draper, played by John Hamm, is the protagonist throughout the series. The setting takes place in New York through the world of the Madison Avenue advertising firms, during the beginning of the 1960's. Draper's life is shown as being one of the top ad men in the business,





gossip girl



Chair of Gossip

Dan Humphrey (who's pictured in the chair), played by Penn Badgley, is one of the 10 main regular characters of the show. It's narrated by this anonymous and mysterious blogger named "Gossip girl" who follows the scandalous lives of privileged upper-class teenagers (one being Humphrey) in the upper east side.

**Rotten
Tomatoes**
AUDIENCE SCORE



EAMES LOUNGE CHAIR CHARLES AND RAY EAMES



The Eames Lounge chair, made by Herman Miller, is that of comfortability, class, accessibility, and a sense of decompressing with putting your feet up. Or in this sense, to production designer Ola Maslik, a chair that fits right into the story of Gossip Girl. This chair takes place in many scenes throughout the show, allowing a sense of both an old classic and lived-in appeal, combined with a more modernist visual style. This nods towards the money that the upper east side carried, however still allowing for the set to have that lived-in aspect.

**Rotten
Tomatoes**
AUDIENCE SCORE



djinn chair

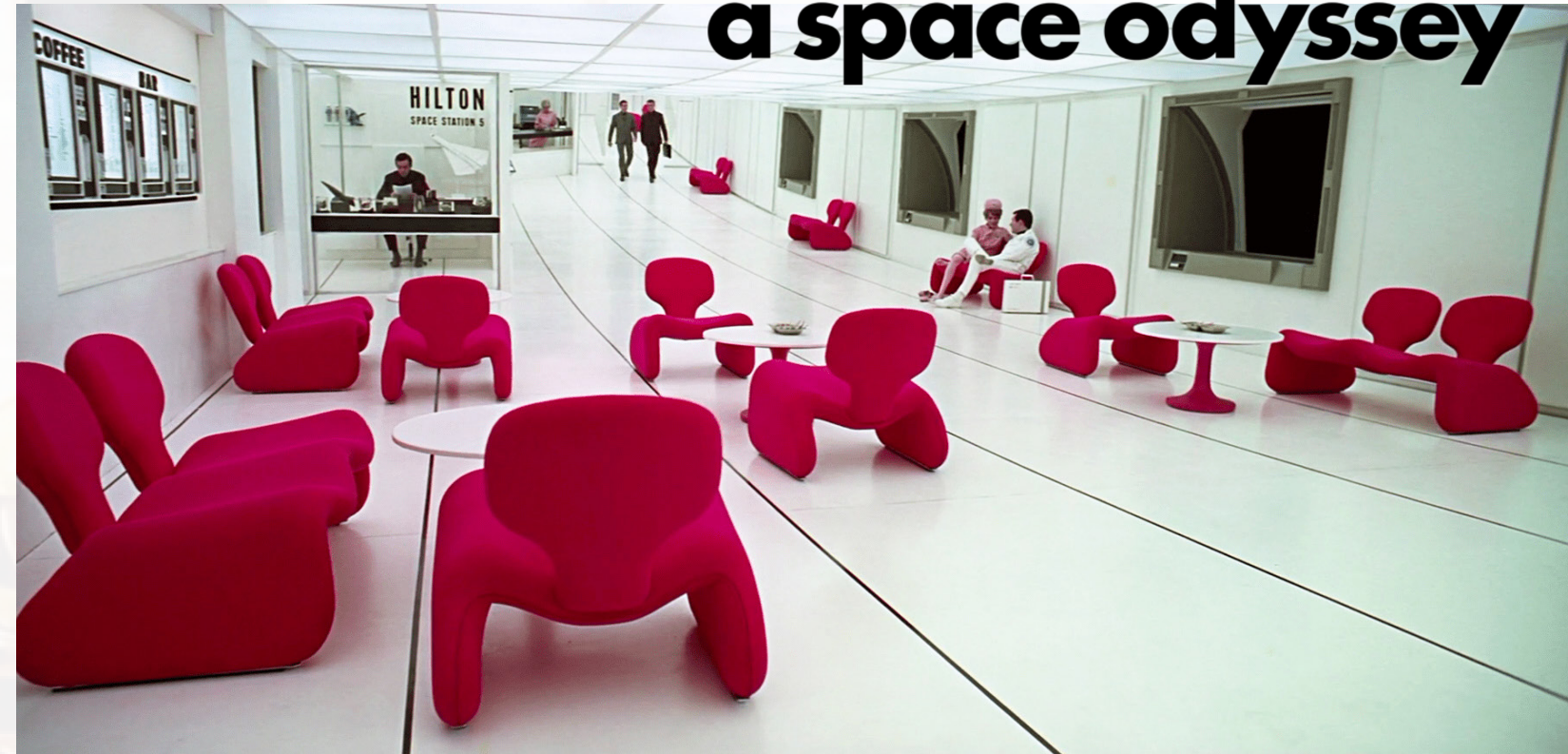
oliver morgue

Production designers, Harry Lange, Anthony Masters, Ernest Archer, and Robert Cartwright, along with the director, Stanley Kubrick, used their combined skills to create a very well communicated set. It almost feels eerie, which it should as the film deals with space and extraterrestrials, but it's done so with such simple scenes. The Djinn chair, created by Oliver Morgue in 1965, ended up being the staple of the film which got released three years later in 1968. Now being in 2024, it's interesting to see their concept of the future in 2001, knowing today this is obviously not what 2001 looked like. However, for the time, (and still arguably today) this is an amazingly crafted concept of a film with a set design that exemplifies the true characteristics of a futuristic alien world.

An epic drama of
adventure and exploration



2001: a space odyssey



Spacious in Space

Dr. Dave Bowman, played by Keir Dullea, is one of the scientists aboard the American spacecraft *Discovery One*, which is headed to Jupiter due to receiving signals from a monolith (machines built by extraterrestrial beings). So it's only fit the chairs should match the alien vibe, right?

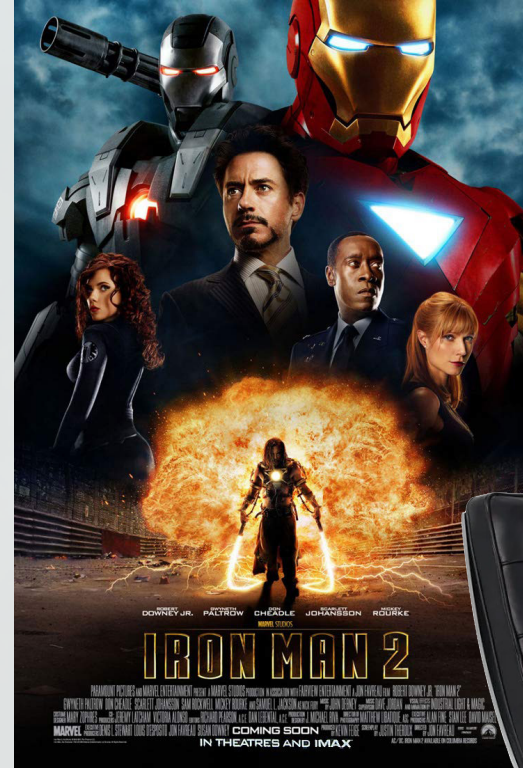


IRON MAN 2

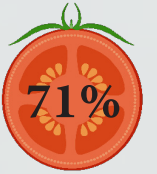


Stark's Style

Tony Stark, played by Robert Downey Jr., is the man behind the suit that flies through the air. A genius, billionaire philanthropist, he can do anything he puts his mind to...whether it's the best idea or not. Due to his celebrity status in the Marvel world, it's only fair his style matches his paycheck.



**Rotten
Tomatoes**
AUDIENCE SCORE



BARCELONA CHAIR MIES VAN DER ROHE

Production designer, J. Michael Riva, is responsible for the appeal of both *Iron Man* and *Iron Man 2*. The Barcelona chair, created in 1929, is a piece of simplistic elegance that screams wealth. It's hand-tufted from a single hide, using only high quality Spinneybeck leather, allowing it to carry a sleek appeal. Regardless of if Iron Man has been on your watch list, your favorite movie, or maybe you've never even seen it, it's not unknown knowledge that Tony Stark is loaded, and can be a little arrogant about it at points too. It's not unlike him to show off what he makes, as in the movies it's shown his massive garage with his collection of both classic and sports cars.



PLATNER ARM CHAIR

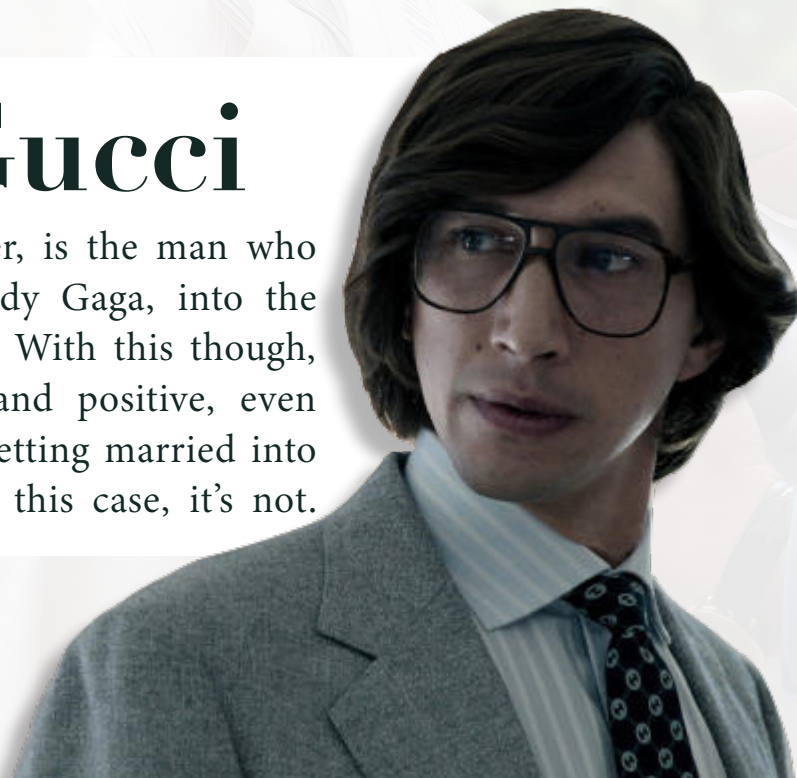
WARREN PLATNER

Introduced by Knoll in 1966, the Platner Arm chair is a staple for modernist furniture, and a testament towards the tedious ability of such an intricately crafted chair. Seriously. The chair requires over a thousand welds. So, it only makes sense that such a detail oriented chair would appear in a show about the Gucci family, one of the most recognizable brands across the world. Production designer, Arthur Max, nailed the true appeal of making the world around them almost feel too nice to even touch in some scenes.



Guilty In Gucci

Maurizio Gucci, played as Adam Driver, is the man who brings Patrizia Reggiani, played as Lady Gaga, into the Gucci family by getting married to her. With this though, does not mean everything is happy and positive, even though it may seem like a grand idea getting married into such a wealthy family. News flash - in this case, it's not.



**Rotten
Tomatoes**
AUDIENCE SCORE





TWO and a half MEN

Walden's Redesign

Walden Schmidt, a divorced internet billionaire played by Ashton Kutcher, was written into the show after Charlie Sheen left. The Navy Chair was a new appearance, as the set had to be transitioned over into Schmidt's redesign of the Malibu beach home that was once Charlie's.



**Rotten
Tomatoes**
AUDIENCE SCORE



EMECO 1006 NAVY CHAIR WILTON C. DINGES

The Navy chair was originally designed for the US. Navy (hence the name), as they needed a chair for the deck of battleships that was able to withstand the torpedo blasts and sea air during its duration on the ship. However, production designer John Shaffner, weaved the chairs into the use of Schmidt and Alan Harper's (played by Jon Cryer) kitchen table. Their lives during the show were lively, but the apartment reflected the fact that they were just two guys with lives full of woes. Thus, allowing for more simplistic furnishings and pieces throughout their place.

**Rotten
Tomatoes**
AUDIENCE SCORE



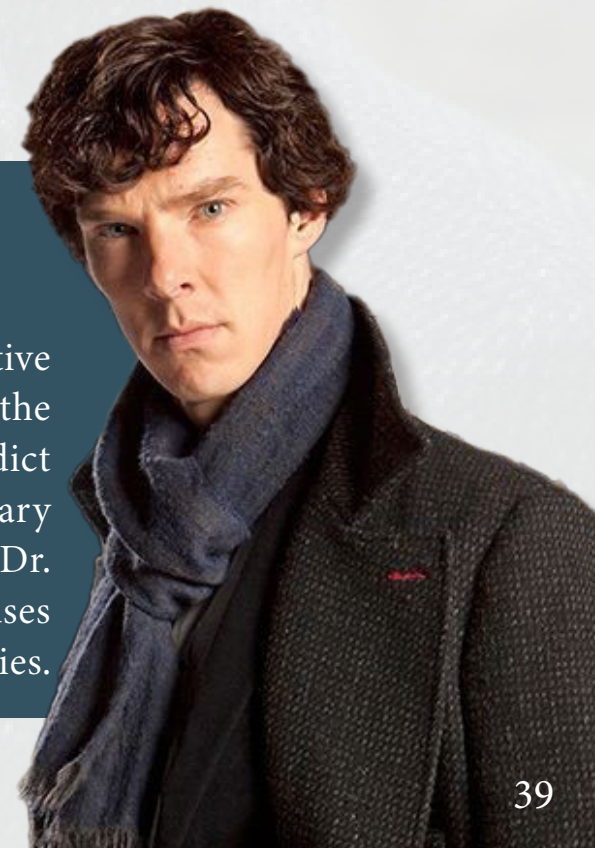
LE CORBUSIER LC3 CHAIR

CHARLES-EDOUARD JEANNERET

The inclusion of the Le Corbusier LC3 chair adds a touch of sleek, modern elegance to the iconic setting of 221B Baker Street. Production designer, Arwel W. Jones, integrates this classic chair to emphasize the contemporary twist on the traditional Sherlock Holmes stories. Its minimalist design and clean lines reflect the protagonist's sharp intellect and meticulous approach to solving mysteries. The LC3 chair's distinctive aesthetic also complements the show's overall stylish and sophisticated visual appeal.

Stylish Sherlock

Sherlock is a modern reimagining of the classic detective stories by Sir Arthur Conan Doyle. The show follows the brilliant and eccentric Sherlock Holmes, played by Benedict Cumberbatch, as he solves complex crimes in contemporary London. Alongside his trusted friend and partner, Dr. John Watson, played by Martin Freeman, Sherlock uses his exceptional deductive skills to unravel mysteries.





THIS MOVIE IS CONSIDERED ROTTEN! TAKE NOTE OF THAT IN REGARD TO CHOICE OF SET DESIGN.



Ball Chair

Eero Aarnio

These Martians start causing mass mayhem, to no one's surprise, (how could you believe they mean well in this movie), and completely crash and take over the talk show right after this scene with the chairs. This movie is a spoof from the alien invasion genre that took over during the 1950's, during a period that had constant rumors of alien visitations. Therefore, the movie was set in the 50's by production designer, Wynn Thomas. The ball chair, by Eero Aarnio, with the choice of a black and white polka dot finish is the perfect encapsulation of a 50's feel.



MARS ATTACKS!

Martian Mayhem

Earth is spontaneously visited by a fleet flying saucers, which talk show host, Nathalie Lake and news reporter, Jason Stone, try to capitalize on with an interview of scientific advisor Professor Donald Kessler (in the right chair). President of the United States, James Dale, played by Jack Nicholson, despite protests from others, in the end chooses to welcome the Martians to Earth. Which you can imagine, wasn't a good idea.





BARB & STAR go to vista del mar

Barb & Star's 5-Star Experience

Barb & Star, played by Annie Mumolo and Kristen Wiig, have a midlife crisis and decide that their going take back their youth. They see an ad for Vista Del Mar, Florida, and immediately set on their journey there from their small town in Nebraska. This spontaneous journey to the Vista Del Mar Hotel brings love, liquor, and a lot of laughter. Oh, and culottes too.



Boltz Rattan Dining Chair

Dive in (quite literally) to the fabulous world of two women who go on a spontaneous vacation to endure and experience moments that will change their life forever. Production designer, Steve Saklad, was the mind behind this set of "Dorothy Draper on steroids". Quite like the minds of Barb and Star, the set exemplifies their colorful and wandering imagination to experience what they've missed out on when they were younger. The boltz rattan dining chair at the hotel bar, gives a minimilistic beach vibe that blends in with the counter to not take away from the vibrant decor.



Rotten Tomatoes
AUDIENCE SCORE





Barbie

Barbie's Dream House

Barbie, played by Margot Robbie, is the real life verison of the dolls everyone played with as kids. The blonde, bubbly sweetheart who's friends with everyone is a blast to watch on screen. Everyone knows her love for pink, and that everything must be that color. Her house, clothes, car, and her chairs! You'd think eventually she'd want a change of scenery after all these years..



Tulip Chair Eero Saarinen

**Rotten
Tomatoes**
AUDIENCE SCORE



Welcome to the fabulous and wonderous world of Barbie. Oh, and Ken too I guess. Production designer, Sarah Greenwood, put this pink paradise together for the set - notably using the tulip chair. Made by Eero Saarinen in 1955, this chair brings a lot of character in its shape while still being dainty and simplistic.

The chair was actually made in mind to help with the reduction of clutter, thus it stands solely on one leg. The chair fits the set not only as they were made pink, but it's very fitting for dollhouse furniture to come in one piece and come nice and compact to fit other decor in the room.



MACKINTOSH HILL HOUSE CHAIR

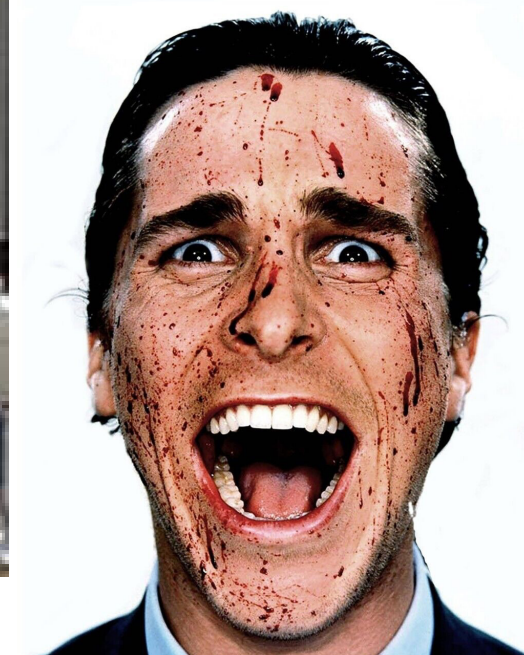
CHARLES RENNIE MACKINTOSH

Production designer, Gideon Ponte, who crafted the psychotic world of Bateman, was the choice behind the chair's appearance. The Mackintosh Hill House chair, designed in 1897 by Charles Rennie Mackintosh, is one of the most recognizable chairs in history due to its unique features. When watching the movie, you question if everything you're experiencing is really what's happening, or if it

chokes up to Bateman's trait of being out of touch with reality. The chair has this unique feature of looking very out of place, as it's around 4 and 1/2 feet tall. It almost subliminally reinforces this theory of what's happening with the utilization of a furniture piece that looks so out of place. Being a killer is unnatural, so it's only right that the set strengthens this feeling of being wrong.



AMERICAN PSYCHO



Patrick's Psyched World

Patrick Bateman, played by Christian Bale, is a wealthy investment banker by day, and a serial killer by night. Greedy, conceited, careless, manipulative and exploitative, he's nothing short of being the friendliest person you'll meet. It's a constant debate on whether what really happened was all in Bateman's head or not, and you start to question everything.

**Rotten
Tomatoes**
AUDIENCE SCORE



Field Lounge Chair



Production designer, Kate Byron, knew just how to make an eerie set constructed present-day, yet set over 70 years ago. In this psychological thriller, set in Victory, California in the 1950's, their home is seen to be filled with pieces found

in antique stores and estate sales by set decorators, Rachael Ferrara and Ashley Bussell. The red field lounge chair, seen in their living room throughout the entire movie, enhances the mid-century modern vibe to immersify the audience in The Chambers' world. It carries the classic traits of 1950's furniture; slender and streamlined legs, and sleek silhouettes. This time period was also characterized by its bold colors and geometric shapes.

Don't Worry Darling



Don't Worry Darling

only in theaters

SEPTEMBER 23

#DontWorryDarling



Alice & Jack's Escape Estate

Alice & Jack Chambers, played by Florence Pugh and Harry Styles, live in a utopian community set in the 1950's. However as most utopians go, not everything is as it seems...and the set design does a great job at exemplifying that apprehensive feel, the 50's appeal, and being *too* perfect all at the same time.

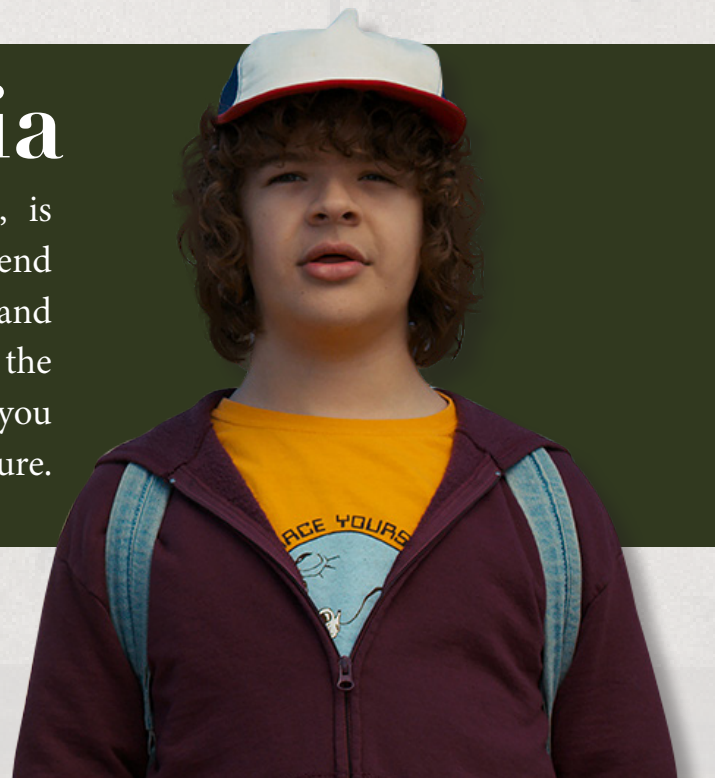




STRANGER THINGS

Dustin's Dystopia

Dustin Henderson, played by Gaten Matarazzo, is the happy go lucky, charismatic and charming friend of the group throughout all seasons. Hilarious and witty, but really smart, he's the one that holds the group together. He'd definitely be there to help if you were getting chased by a demogoron - that's for sure.



Rotten Tomatoes
AUDIENCE SCORE



SWIVEL MAMASAN BUCKET CHAIR



In season one, set in 1983, pictured in the top left, we get introduced to the Henderson household. Sure enough, it's filled with trinkets and toys from the respective decade, along with the brown and green hues, patterned wallpaper, and wooden furniture.

The Rattan Swivel Mamasan Bucket chair is a perfect encapsulation of the 80's. Production designer, Chris Trujillo, is the amazing mind behind the thought towards every set throughout the series. If you watch the show, you'll start to notice that the furniture in each house is accurate to their families state of income.

THE DEVIL WEARS PRADA



**Rotten
Tomatoes**
AUDIENCE SCORE



DIAMOND CHAIR HARRY BERTOIA



Devil In Diamond

Andrea (Andy) Sachs, played by Anne Hathaway, is an aspiring journalist and recent college grad starting her first job at Runway magazine. However, Sachs knows absolutely nothing about the fashion industry. Enter Miranda Priestly, played by Meryl Streep, who's the editor-in-chief of Runway and "devil" boss who starts to cost Andy's life in the reward of success.

Production designer, Jess Gonchor, made the movie adaptation visuals come to life from the story by Lauren Weisberger, who based her 2003 novel off of her own experience being the assistant to Vogue editor-in-chief, Anna Wintour. From her job duration, she saw the furniture pieces and glamour that surrounded Wintour's office, and of course had to replicate that feeling in the movie.

The diamond chair, made in 1952 by Harry Bertoia, is made with welded steel with rods in bonded drilsan (a high performance polymer), or polished or satin chrome. It's sharp, elegant, sleek, and intimidating, everything perfect for a wealthy fashion magazine EIC. Today, sold from the company Knoll, the chair runs for close to 2000 with taxes and delivery. Right up Miranda Priestly's ally.

**Rotten
Tomatoes**
AUDIENCE SCORE



THIS MOVIE IS
CONSIDERED
ROTTEN! TAKE
NOTE OF THAT
IN REGARD TO
CHOICE OF SET
DESIGN.



ARGYLE CHAIR
CHARLES RENNIE MACKINTOSH

The production designer, Edward Pisoni, uses the Argyle chair to add a touch of rustic charm to the film's camp setting. It appears in the very first scene of the movie, quite literally setting the tone of the story. Its natural wood construction and classic design reflect the outdoor, back-to-nature vibe of the story, grounding the narrative in a warm and comfortable aesthetic that enhances the film's overall atmosphere.



Summer of Chairs

Alan, played by Sean Astin, faces the challenges of the wilderness under the guidance of a seasoned instructor, Vic, played by Kevin Bacon. As Alan learns survival skills and encounters unexpected obstacles, he also gains important life lessons about independence, resilience, and leadership.

NORMAL PEOPLE



**Rotten
Tomatoes**
AUDIENCE SCORE



HANS WEGNER WISHBONE CHAIR HANS J. WEGNER

The Hans Wegner Wishbone chair is used effectively in *Normal People* to bring a sense of Scandinavian elegance to the characters' world. Production designer, Norma Sheahan, includes the chair in intimate settings, where its airy form mirrors the understated and emotional moments between Connell and Marianne, encapsulating the show's focus on nuanced personal experiences. It's the perfect chair that encapsulates a lot of meaning while looking very minimalist, a great choice for this genre and setting.



N O R M A L P E O P L E

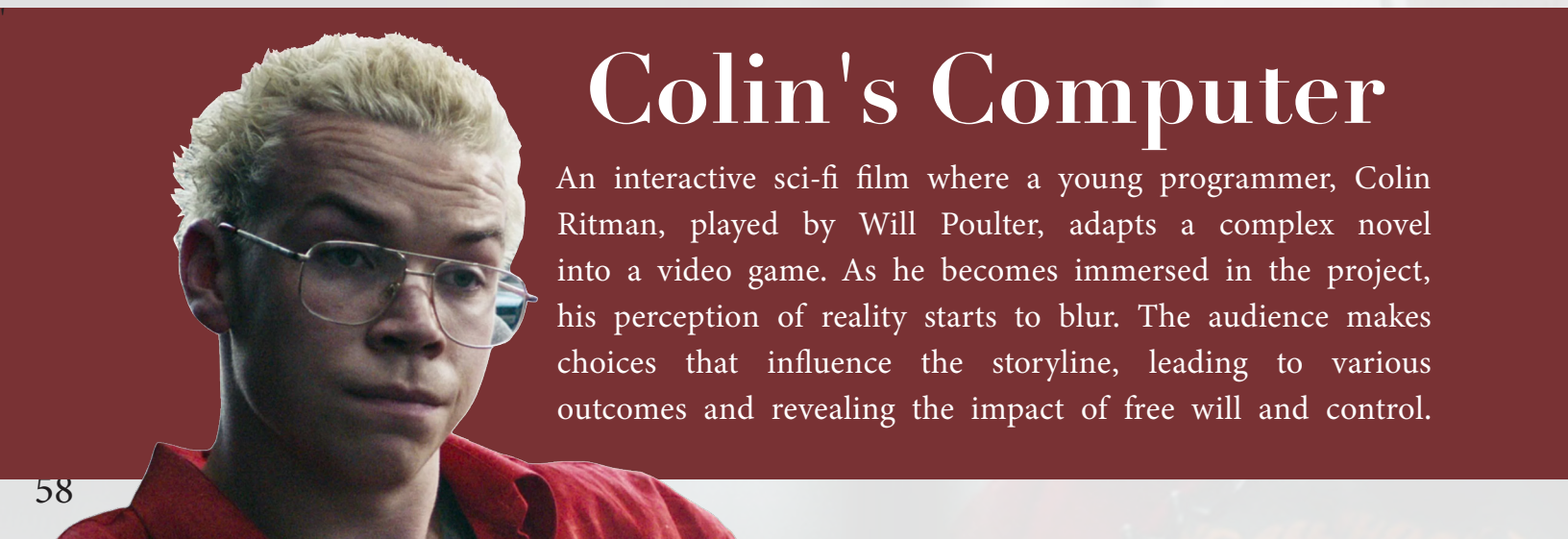
Marianne's Normal

This series is a coming-of-age story that follows the complex relationship between Connell, played by Paul Mescal, and Marianne, played by Daisy Edgar-Jones, who are two Irish teenagers from different backgrounds. As they navigate love, identity, and emotional growth, their connection evolves over time, revealing the depth and complexity of their bond.





BLACK MIRROR BANDERSNATCH



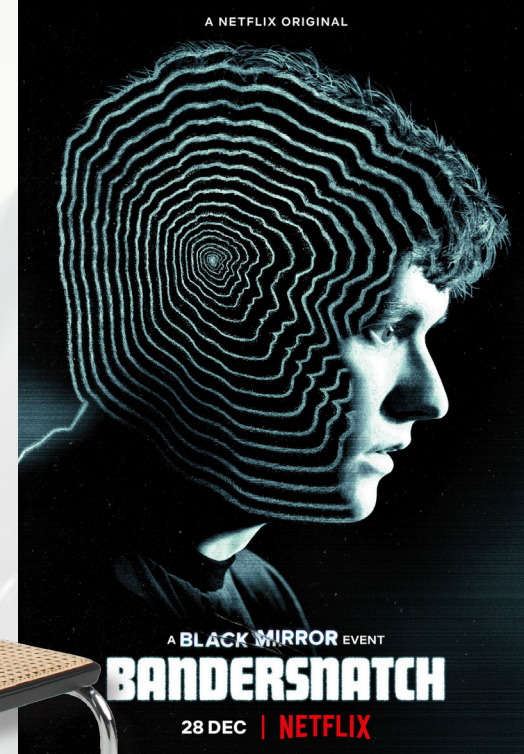
Colin's Computer

An interactive sci-fi film where a young programmer, Colin Ritman, played by Will Poulter, adapts a complex novel into a video game. As he becomes immersed in the project, his perception of reality starts to blur. The audience makes choices that influence the storyline, leading to various outcomes and revealing the impact of free will and control.

**Rotten
Tomatoes**
AUDIENCE SCORE

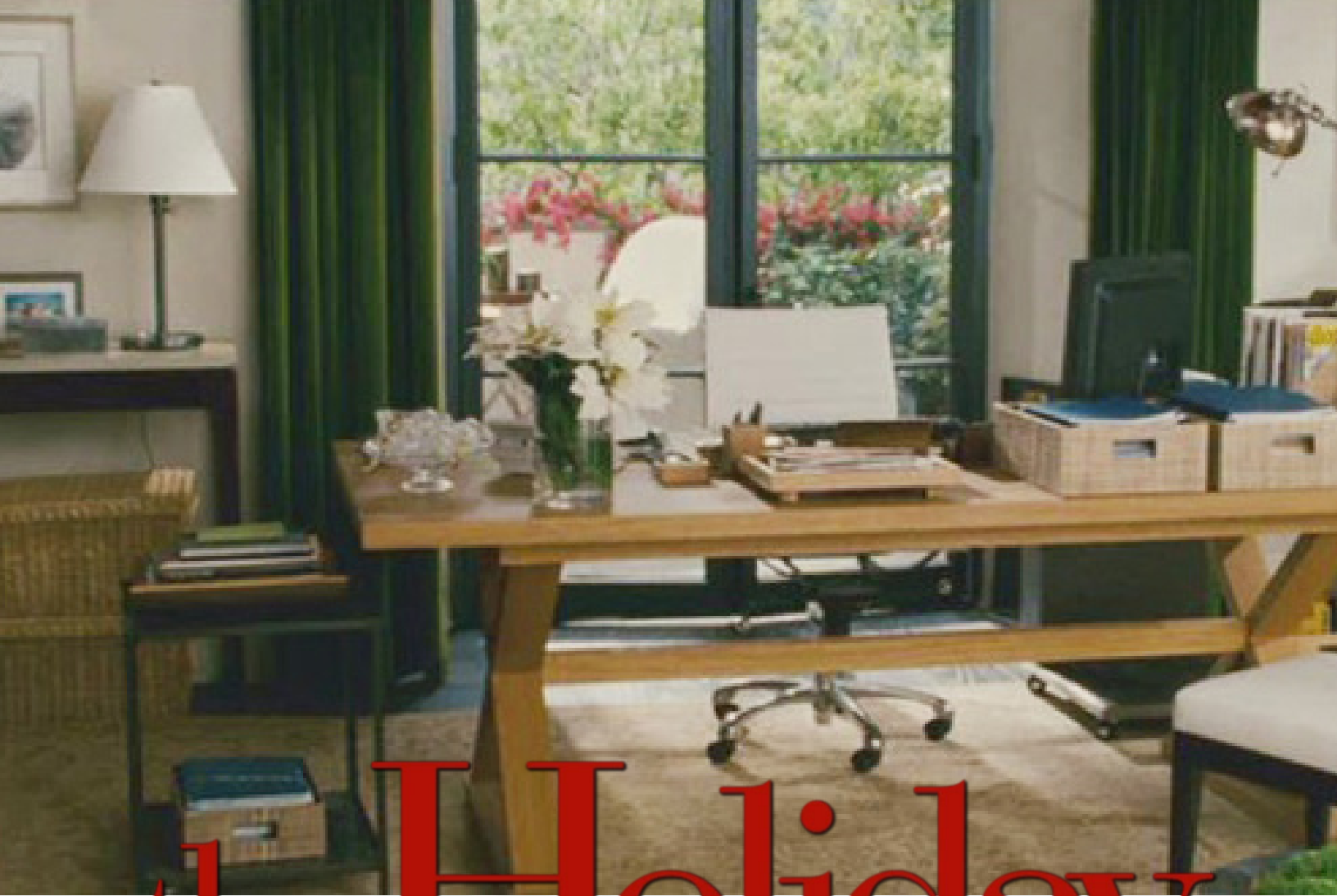


THIS MOVIE IS
CONSIDERED
ROTTEN! TAKE
NOTE OF THAT
IN REGARD TO
CHOICE OF SET
DESIGN.



MARCEL BREUER CESCA CHAIR MARCEL BREUER

In *Black Mirror: Bandersnatch* production designer, Joel Collins, incorporates the Marcel Breuer Cesca chair, known for its modernist design, to fit perfectly with the 1980s setting. The chair immerses viewers in the era's aesthetic, combining tubular steel and woven cane to echo the film's exploration of technology and the relationship between both the reality and virtual worlds.



the Holiday

Holiday Away

A romantic comedy about two women—one from Los Angeles and one from England—who swap homes during the holiday season to escape their own lives. As they settle into each other's homes, they find unexpected love and experience personal growth, discovering what truly matters to them.



Cameron Diaz · Kate Winslet · Jude Law · Jack Black

a film by
Nancy Meyers
the Holiday
from the Director of What Women Want and Something's Gotta Give



**Rotten
Tomatoes**
AUDIENCE SCORE



EAMES ALUMINUM CHAIR CHARLES AND RAY EAMES

The Holiday's production designer, Jon Hutman, includes the Eames Aluminum chair, adding an element of sleek, modern sophistication to the film's settings. The chair's timeless design provides a visual contrast to the cozy holiday environments, which is an important element to have to break up the audience's expectation of the set. This gives the ability to highlight the distinct worlds both the characters inhabit as they embark on their journeys.

**Rotten
Tomatoes**
AUDIENCE SCORE



WASSILY LOUNGE CHAIR

MARCEL BREUER

In *X-Men: First Class* production designer, Chris Seager, employs the Wassily chair's minimalist and sleek design to enhance the futuristic and stylish atmosphere of the film. Its geometric shapes and polished steel structure align with the story's focus on advanced mutant abilities and high-tech environments, allowing the chair to speak for the atmosphere around where it's placed. The Wassily chair is strong yet lightweight, words that usually aren't associated with each other, making it a great addition to a set based around a fictional world.

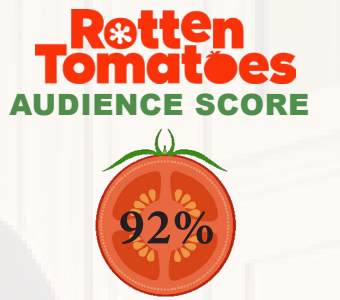
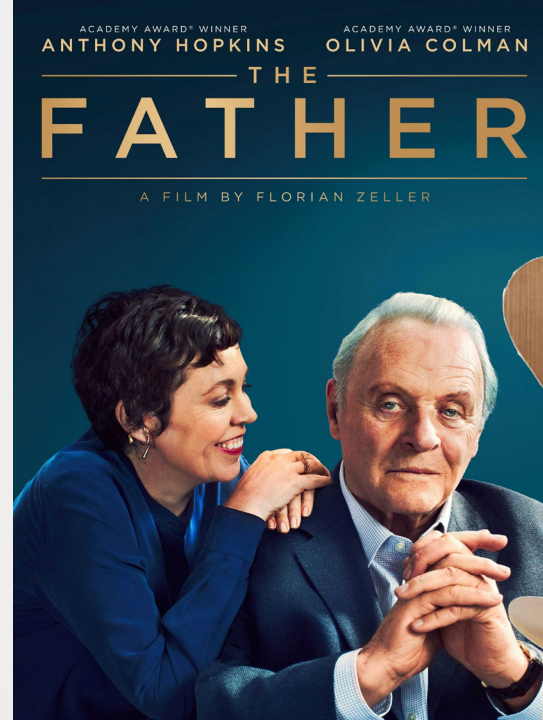


X-MEN



X-HEROES

A superhero film that depicts the origin of the X-Men and the friendship and eventual rift between Charles Xavier, played by James McAvoy, and Erik Lehnsherr, played by Michael Fassbender. As they gather a team of mutants to prevent a global crisis, their differing views on human-mutant relations set the stage for future conflicts.



ARNE JACOBESSEN SERIES 7 CHAIR FRITZ HANSEN

Production designer, Peter Francis, utilizes the Arne Jacobsen Series 7 chair in *The Father* to bring understated elegance and simplicity to the domestic settings. Its smooth lines and classic shape evoke a sense of order and familiarity, contrasting with the emotional turmoil experienced by the aging protagonist. The chairs appear in the hallway of the doctors office, and what's interesting to note about the movie is that the hallway will change in appearance. This is due to further immersing the viewer into the fact that Anthony starts to forget how certain settings actually looked.



Life of Anthony

A poignant drama about an aging man, Anthony, played by Anthony Hopkins, struggling with memory loss. As his condition worsens, his relationship with his daughter is tested, and he grapples with the loss of his sense of self. The film offers a powerful exploration of the impact of dementia on both the individual and their loved ones.



BEYOND THE BLACK RAINBOW



Eva's Eerie World

A visually striking, science fiction film set in a mysterious research facility in the 1980s. The movie follows Elena, played by Eva Bourne, who has unique abilities and is held captive by a sinister doctor. The story unfolds through its atmospheric and surreal aesthetics, blending haunting visuals with a synth-heavy soundtrack to create a deeply unsettling and otherworldly experience.



PANTON CHAIR Verner Panton

**Rotten
Tomatoes**
AUDIENCE SCORE



THIS MOVIE IS
CONSIDERED ROTTEN!
TAKE NOTE OF THAT IN
REGARD TO CHOICE OF
SET DESIGN.

In *Beyond the Black Rainbow*, the use of the Panton chair, made by Verner Panton, adds to the film's futuristic and otherworldly atmosphere. Production designer, Jennifer Haffenden, incorporates this iconic chair to enhance the film's sterile, cold aesthetic within the research facility.

Its bold, fluid design and vibrant colors contrast with the oppressive environment, reflecting the experimental and unsettling nature of the story. The Panton chair's unique appearance contributes to the film's visually striking and surreal experience as a viewer.



HOW DO YOU KNOW

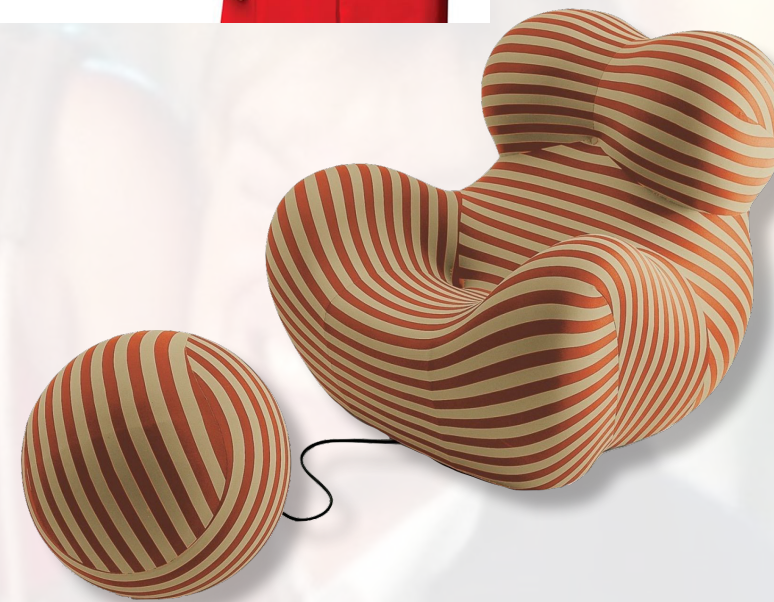
Lisa's Love Life

A romantic comedy that centers on Lisa, played by Reese Witherspoon, who navigates her relationships and career as she faces unexpected changes in her life. Caught in a love triangle and facing a professional crossroads, she embarks on a journey of self-discovery to find out what truly makes her happy.



**Rotten
Tomatoes**
AUDIENCE SCORE

THIS MOVIE IS
CONSIDERED ROTTEN!
TAKE NOTE OF THAT IN
REGARD TO CHOICE OF
SET DESIGN.



UP CHAIR GAETANO PESCE

Production designer, Jeannine Oppewall, chooses the Up chair for *How Do You Know* to infuse the setting with a playful and modern touch. The chair's

unique form mirrors the protagonist's unpredictable journey, emphasizing the romantic comedy elements of how things can be so up and down (literally). It also ties into the theme of self-discovery, with an unpredicted striped finish that makes the scene pop.



LA LA LAND

La La Love the Set

A musical romance that tells the story of an aspiring actress, Mia, played by Emma Watson, and a jazz musician, Sebastian Wilder, played by Ryan Gosling, as they pursue their dreams in Los Angeles. Their journey is marked by passion, challenges, and the pursuit of artistic excellence, as they navigate the complexities of both love and ambition.



**Rotten
Tomatoes**
AUDIENCE SCORE



THONET CHAIR NO 18 GEBRÜDER THONET

Production designer, David Wasco, incorporates the Thonet chair No. 18, bringing a timeless, classic elegance to the film's sets. It has a talent of blending into the scene but sticking out at the same time,

knowing the imperative history it has behind how it is today. Its curved wood design complements the movie's homage to old Hollywood, evoking a sense of nostalgia and romance that aligns with the characters' dreams.



**Rotten
Tomatoes**
AUDIENCE SCORE



WEGNER CH07 SHELL LOUNGE CHAIR

HANS J. WEGNER

Animator, Lou Romano, uses the Wegner CH07 Shell Lounge chair in *The Incredibles* to perfectly suit Edna Mode's personality and style. Its unique, curvaceous design combines comfort and a unique appearance, mirroring the balance between the everyday life of the characters in the movie combined with their extraordinary abilities. If there's one thing about Edna, it's the fact that it's going to come in black. So, no surprise to the color choice either. Although not an exact look-alike to the chair in reality, you can easily tell the inspiration taken from this chair.



THE INCREDIBLES

Edna's Eclectic Taste

An animated superhero comfort film about a family of heroes who come out of their retirement to save the world...in their own unique ways. As they balance their secret identities with their everyday lives, they do their best to work together to protect their city against a formidable enemy, Syndrome, voiced by Jason Lee. Oh. There's the fashion designer Edna Mode too.

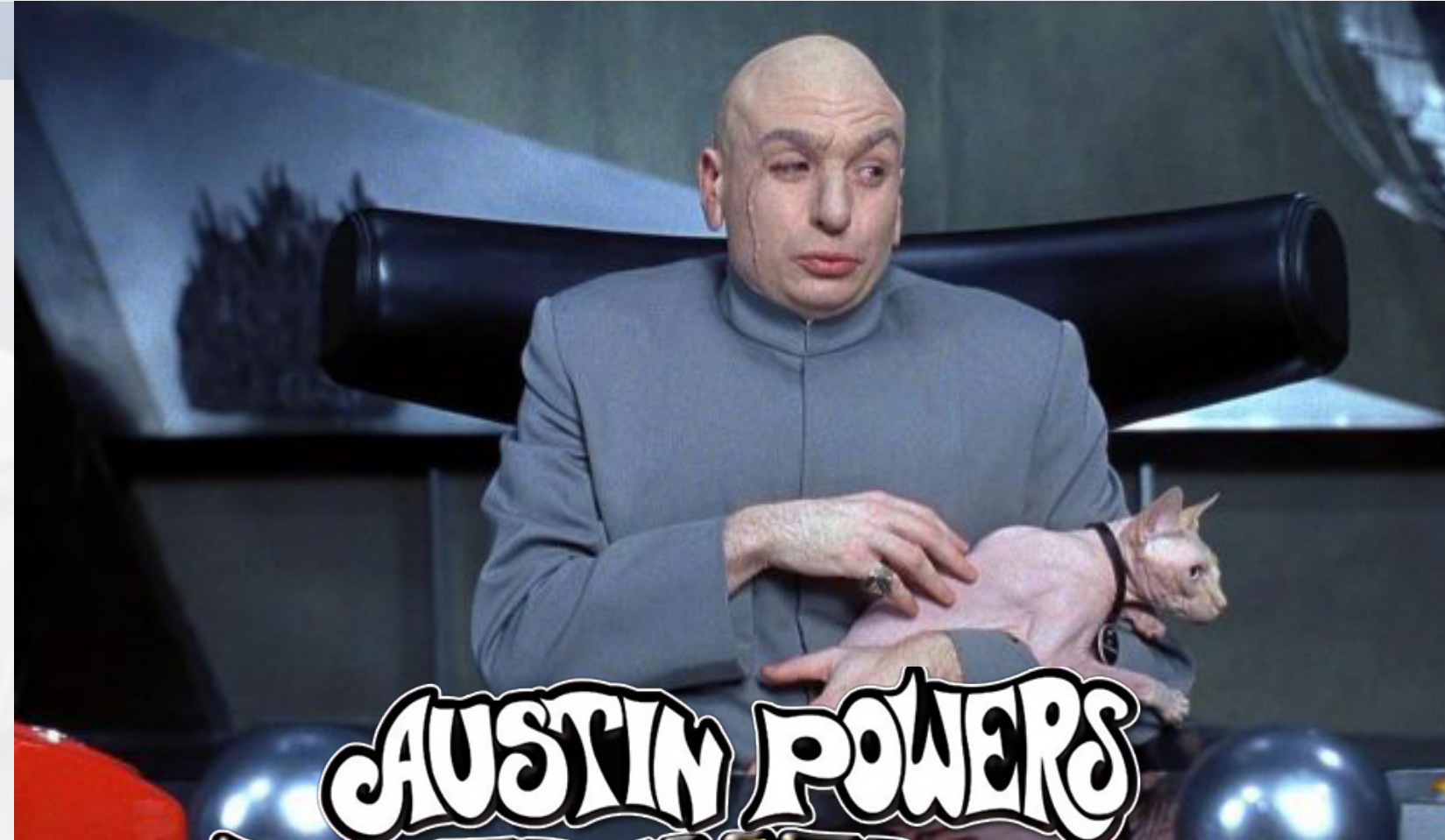




OX CHAIR

HANS J. WEGNER

In **Austin Powers: International Man of Mystery** production designer, Cynthia Charette, integrates the Ox chair, whose bold, eccentric design complements the film's quirky and humorous tone. Its striking appearance adds to the film's retro-inspired style, enhancing the groovy aesthetic. Most of all though, it highlights Dr. Evil's intentions and demeanor he has in the movie. As his name quite literally states his role, it checks out that his chair is that similar to the Blofeld chair for Villain Blofeld, who's just as devious — but in a completely different universe.



AUSTIN POWERS INTERNATIONAL MAN OF MYSTERY



Dr. Evil's Seat of Power

A comedy that follows a quirky British spy, Austin Powers, played by Mike Myers, who is thawed from cryogenic freeze to stop his arch-nemesis, Dr. Evil (also played by Mike Myers). As he navigates the 20th century, he faces hilarious challenges and uses his charm and wit to save the world from Dr. Evil's plans.



ZOOLANDER



Mugatu's Marvelous Office

Mugatu, played by Will Ferrell, is the fashion designer who doubles as the bad guy in the movie, attempting to brainwash Derek Zoolander, played by Ben Stiller for his own gain. It's easily forgiven though for his outrageous style choices and comedic timing. Oh. Not to mention his beloved poodle, Kiva the Diva.



**Rotten
Tomatoes**
AUDIENCE SCORE



EGG CHAIR ARNE JACOBSEN

Production designer, Robin Standefer, created the crazy fashionable world in the movie *Zoolander*. When Derek Zoolander loses becoming Male Model of the Year after a three year streak to his rival, Hansel, played by Owen Wilson, his world turns upside down. Luckily for him, Jacobim Mugatu sees Zoolander as perfect prey for not only his own fashion show, but to carry out his devious deeds.

The egg chair, made in 1958, seems to be the perfect choice to exemplify the villainous settings in cinema. Similar to the shape of the Blofeld chair in *You Only Live Twice*, there's wings that curve up and around the user on either side, adding an ominous aspect of covering up who's sitting in it. That, and the fact that the movie is based around the fashion industry. You have to have statement pieces in this bizarre world of their taste.



**Rotten
Tomatoes**
AUDIENCE SCORE



LOUIS XV ARMCHAIR

GONE WITH THE WIND

Production designer, William Cameron Menzies, features the Louis XV armchair in *Gone with the Wind*, bringing period authenticity and luxury to the film's settings. The ornate details and elegant lines enhance the film's grand drama, reflecting the lavishness and complexities of the story. The movie being released in 1939, and being set in 1861 during the Civil War, it's important that the design is taken into consideration to what was actually accurate during the time, which Menzies did a fantastic job of doing. It was during the filming of this movie that the term production designer was coined, as Orson Welles, the director of the film, could not believe the unbelievable vision and talent that Menzies held.

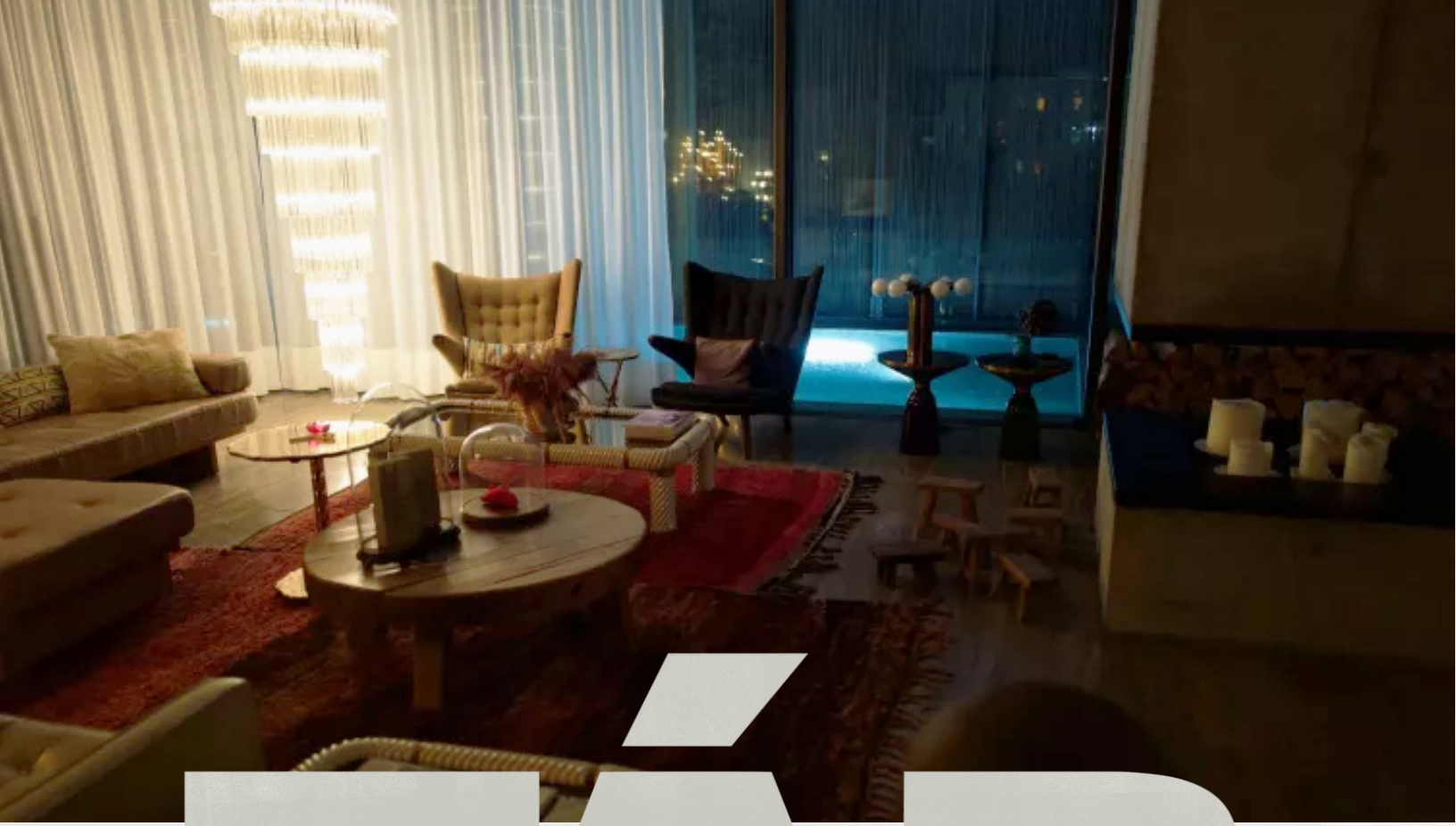


GONE WITH THE WIND



Scarlett's Serenity

A sweeping historical drama set during and after the American Civil War, focusing on the tumultuous romance between Scarlett O'Hara, played by Vivien Leigh, and Rhett Butler, played by Clark Gable. The film explores themes of love, ambition, and survival, set against the backdrop of a changing South.



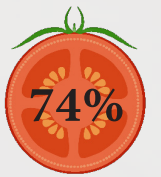
TÁR

A Musician's Masterpiece

This film explores the life and struggles of an artist and musician, Lydia Tár, played by Cate Blanchett, by delving into the challenges she faces in both her career and personal life. It focuses on and examines themes such as artistic passion, the pursuit of excellence, and the sacrifices made in the name of art.



**Rotten
Tomatoes**
AUDIENCE SCORE



PAPA BEAR CHAIR HANS WEGNER

In *Tár*, production designer, Florian Hoffmeister, uses the Papa Bear chair's plush and cozy design to create a welcoming and intimate atmosphere. The Papa Bear chair was made in 1951, and is also known as the Teddy Bear chair. Its mid-century modern style complements the artistic themes explored in the film, providing a comfortable space for the protagonist's introspection and creative process.

**Rotten
Tomatoes**
AUDIENCE SCORE



BUTTERFLY CHAIR

ANTONIO BONET, JUAN KURCHAN, AND JORGE FERRARI HARDOY

Production designer, Mark Tildesley, chooses the Butterfly chair in *No Time to Die* for its lightweight and minimalist design, conveying modernity and practicality in the spy film's settings. The chair was created in 1938 in Buenos Aires, Argentina, while working in Le Corbusier's studio. Its sleek appearance mirrors the contemporary approach to the James Bond adventure, as he faces new challenges in a changing world. From being so versatile that it can be placed in any setting, this chair really does it all.

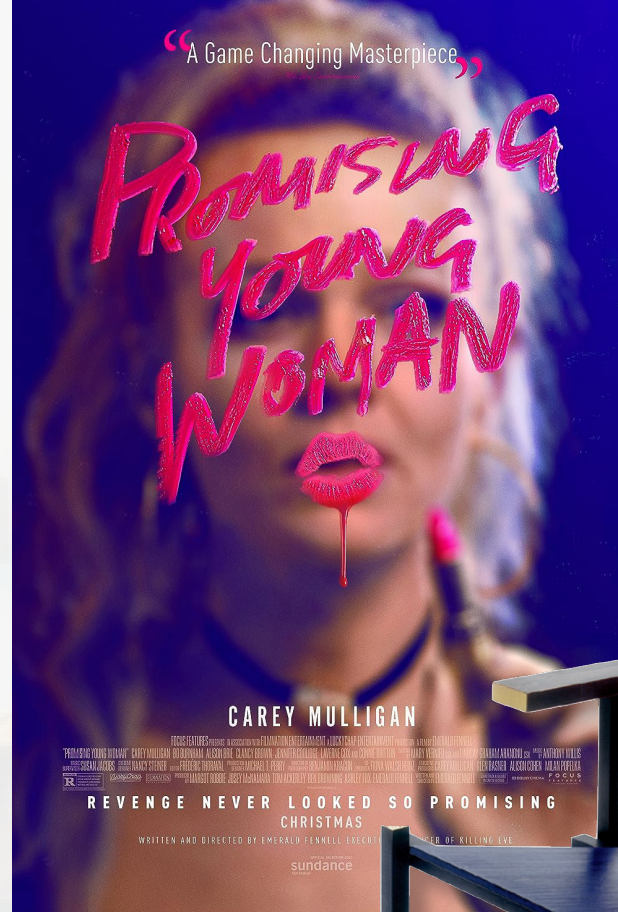


NO TIME TO DIE 007



No Time to Waste

A thrilling James Bond, played by Daniel Craig, where we see the iconic spy take on a dangerous mission involving a mysterious adversary with a powerful new weapon. As Bond navigates a web of deceit and betrayal, he faces challenges that test his loyalty and courage.



**Rotten
Tomatoes**
AUDIENCE SCORE



**Promising
Young
Woman**

RED AND BLUE CHAIR

GERRIT RIETVELD

Production designer, Michael Perry, employs the Red and Blue chair's bold, geometric design in *Promising Young Woman* to make a strong visual statement. The chair was created around 1917, and completely redefined the traditional appeal of form within an object placed in a household. Its unconventional appearance reflects the protagonist's daring approach to seeking justice and challenging societal norms.



The Double Life

A suspenseful thriller about Cassandra Thomas, played by Carey Mulligan, who seeks justice for a past trauma. Living a double life, she's a barista by day and.. well you'll see what she gets up to at night when you watch. She confronts difficult truths and takes matters into her own hands, while facing the consequences of her choices.



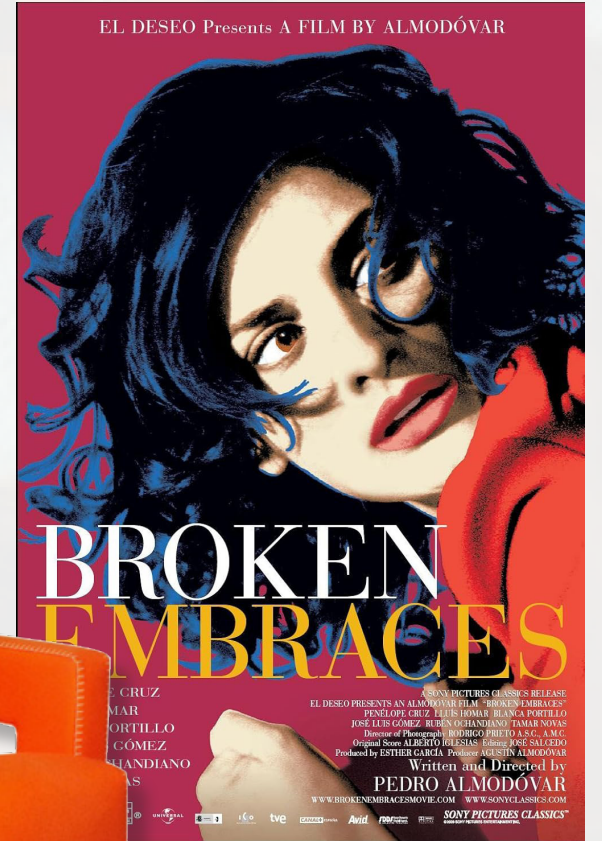
BROKEN EMBRACES



A Time to Heal

A drama following a filmmaker, Mateo Blanco, played by Lluís Homar, who grapples with a tragic past as he navigates love and loss. The story unfolds through intertwined narratives that reveal the impact of past decisions on present circumstances.

**Rotten
Tomatoes**
AUDIENCE SCORE



637 UTRECHT ARMCHAIR GERRIT THOMAS RIETVELD

Production designer, Antxon Gómez, incorporates the 637 Utrecht Armchair in *Broken Embraces* to add an air of sophistication to the film's settings. Its sharp angles and bold lines align with the filmmaker's journey of navigating love, loss, and artistic struggles. This chair was made in 1935, originally for a department store. The chair, was named after the city that Rietveld was born in.



**Rotten
Tomatoes**
AUDIENCE SCORE



SUCCESION

SCANDIA CHAIR

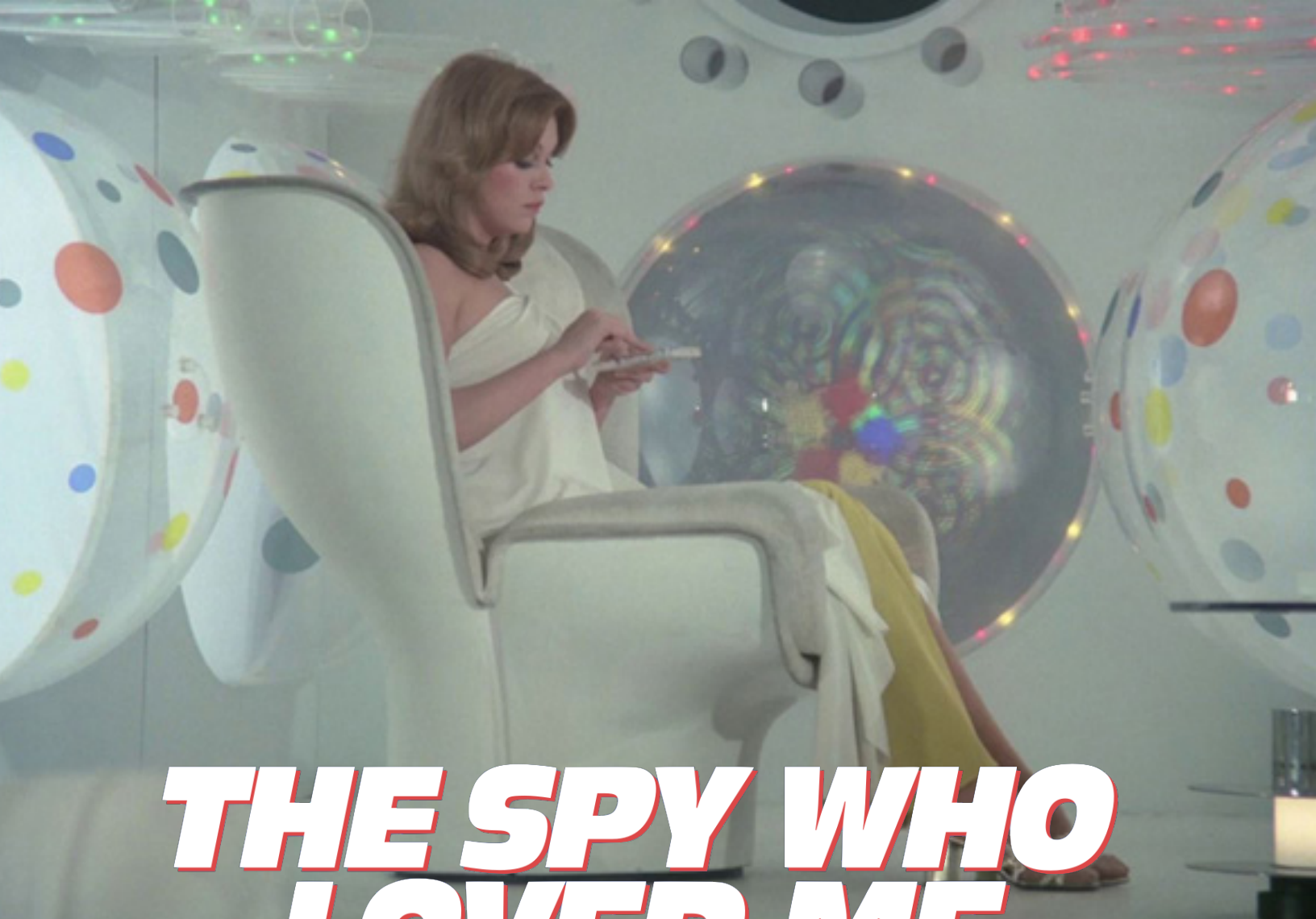
HANS BATTRUD

Production designer, Stephen Carter, includes the Scandia Chair in *Succession* for its modernist and sculptural design, seamlessly fitting into the world of wealth and power struggles depicted in the series. The chair, first introduced in 1960 Norway, was the pioneer for high frequency lamination. Today, this is now the most common production technique, so it's fascinating to see technology come so far. Its sleek and refined style enhances the show's corporate environments and complex family dynamics.

Fight for Control

A drama series that explores the power struggles within a wealthy family as they fight for control of a global media empire. The series examines complex family dynamics, loyalty, and ambition as the characters vie for power and influence.





THE SPY WHO LOVED ME



The Name's Bond.

A classic James Bond film, played by Roger Moore, where the secret agent teams up with a Russian agent to stop a villain's plan for world domination. Together, they embark on an adventure that takes them across the globe, facing danger and intrigue along the way.

Rotten Tomatoes
AUDIENCE SCORE



JOE COLOMBO ELDA CHAIR JOE COLOMBO

In *The Spy Who Loved Me*, production designer, Ken Adam, integrates the Joe Colombo Elda chair's futuristic and ergonomic design to bring modern luxury to the set. The chair, which was made in 1963,

was crafted from molded fiberglass and finished hand-applied coating, giving it a signature unique touch. Its curvaceous shape and comfortable appeal match the film's emphasis on high-tech gadgets and international surveillance.

It's the **BIGGEST**. It's the **BEST**. It's **BOND**.
And **B-E-Y-O-N-D**.



starring BARBARA BACH and CURT JURGENS as "Sromberg" - Produced by ALBERT R. BROCCOLI - Directed by LEWIS GILBERT
Screenplay by CHRISTOPHER WOOD & RICHARD MAIBAUER - Music by MARVIN HAMLISCH - Filmed in PANAVISION
United Artists

**Rotten
Tomatoes**
AUDIENCE SCORE



SUITS

THE COMPLETE SERIES



EAMES SOFT PAD OFFICE CHAIR CHARLES AND RAY EAMES

Production designer, Christopher Nelson, made the perfect selection of the Eames Soft Pad Office Chair for its classic and stylish design, which encapsulates the law firm's offices in *Suits*. Its professionalism reinforces the series' focus on legal drama and high-stakes cases, creating an elegant backdrop for the fast-paced world of corporate law without taking your eyes away from the juicy details. Interesting to note how many chairs originate from Charles and Ray Eames. Fun fact, Herman Miller is the sole manufacturer of all things Charles and Ray Eames, except for Europe and the Middle East.



SUITS

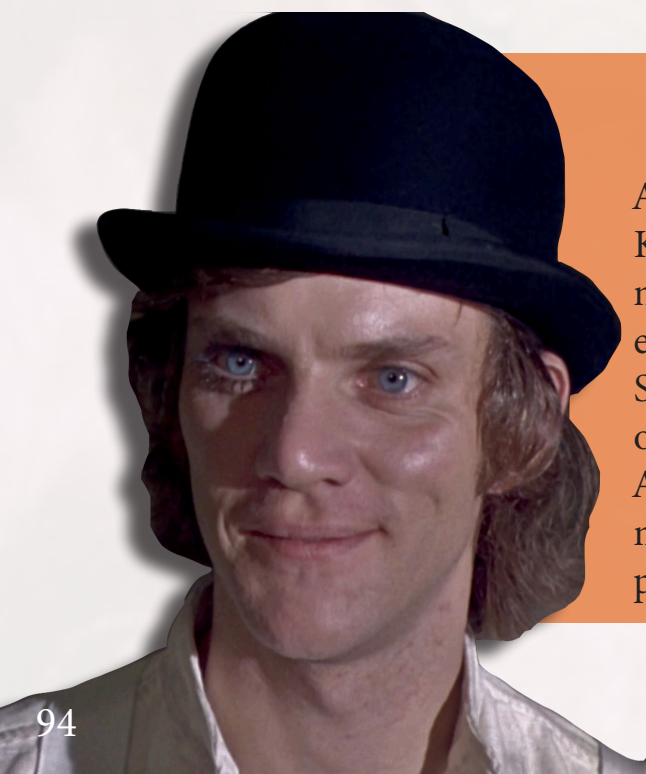


Suited In Style

A legal drama series centered on a talented college dropout, Michael Ross, played by Patrick J. Adams, who starts working at a top law firm despite lacking a law degree. All of this, due to his power of a photographic memory. As he navigates the world of corporate law, he must maintain his secret while handling high-stakes cases and forming complex relationships.

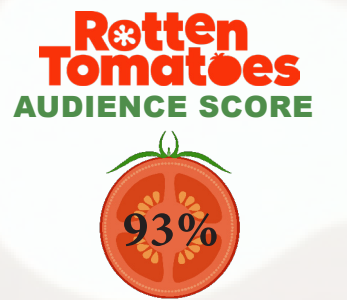
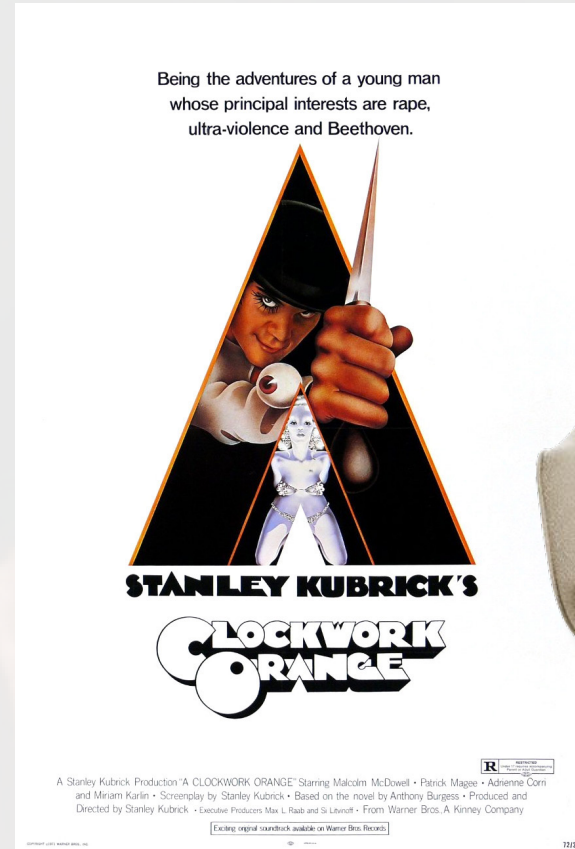


CLOCKWORK ORANGE



Malcom's Mischief

A dark and provocative film directed by Stanley Kubrick. It follows the story of a young delinquent named Alex, played by Malcom McDowell, who enjoys committing acts of violence with his gang. Set in a dystopian future, the film explores themes of free will, morality, and societal control as Alex faces the consequences of his actions. The movie is known for its striking visuals, intense performances, and thought-provoking narrative.



SAARINEN EXECUTIVE CONFERENCE CHAIR EERO SAARINEN

The use of the Saarinen Executive conference chair, through the choice of production designer John Barry, enhances the film's visual aesthetic and thematic depth. Its modern design and elegant curves contrast with the movie's dark, dystopian setting, emphasizing the disconnect between the characters' violent actions and the sophisticated environments they inhabit. The chair's sleek lines and contemporary style add a layer of artistic tension, reflecting the film's exploration of societal norms and the manipulation of power and control.

**Rotten
Tomatoes**
AUDIENCE SCORE



PIERRE PAULIN RIBBON F582

PIERRE PAULIN

In the original series of *Star Trek* The choice of incorporating the Pierre Paulin Ribbon F582 chair adds a futuristic and stylish touch to the show's set design. Its distinctive, sculptural shape aligns with the series' vision of advanced, sleek aesthetics in the 23rd-century space exploration setting. The chair's modern design helps create an atmosphere that emphasizes the progressive and innovative world of *Star Trek*, enhancing the visual appeal and immersion for viewers.



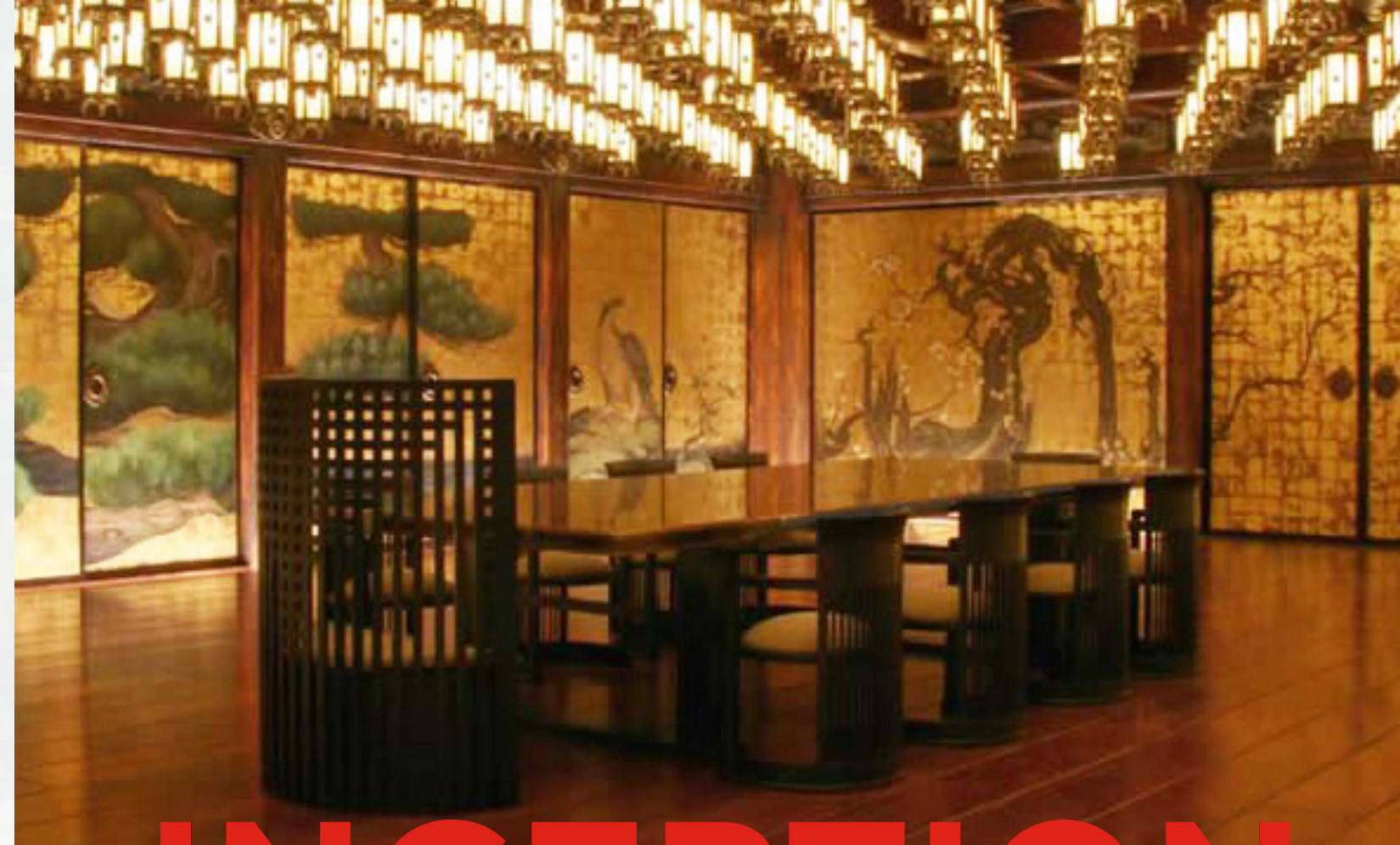
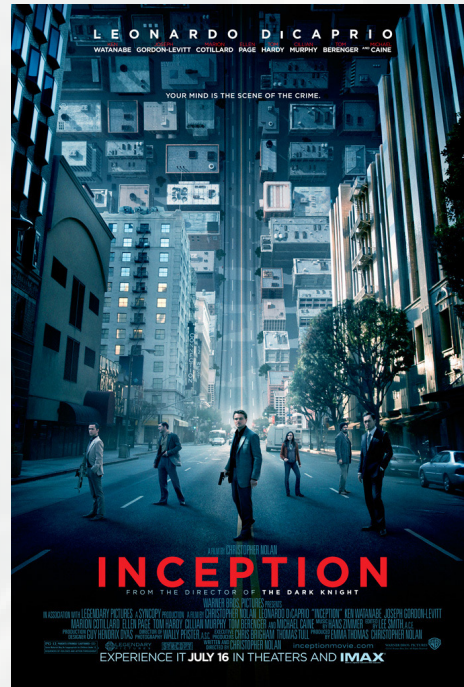
STAR TREK



Sleekness of Star

Star Trek is a classic sci-fi series that follows the adventures of the starship USS Enterprise and its crew as they explore the galaxy. The series is known for its innovative storytelling, addressing complex themes such as diversity, ethics, and diplomacy. Through encounters with alien species and new civilizations, the crew tackles challenging moral dilemmas and navigates the wonders and dangers of space travel.

**Rotten
Tomatoes**
AUDIENCE SCORE



INCEPTION

CHARLES RENNIE MACKINTOSH WILLOW CHAIR

The willow chair, made by Charles Rennie Mackintosh, adds a touch of organic, intricate design that contrasts with the modern and surreal dreamscapes. This unique piece of furniture emphasizes the blending of real and dream worlds, enhancing the film's visual appeal and viewers' understanding of the sheer actual inability of it all. It adds a sense of depth and elegance to the scenes, contributing to the overall mysterious and immersive atmosphere.



Planting a Dream Seed

Inception is a mind-bending sci-fi thriller about a skilled thief, Cobb, played by Leonardo DiCaprio, who enters dreams to steal secrets. He is tasked with planting an idea in someone's mind, facing complex dream layers and blurred realities. The film combines intense action with thought-provoking themes about perception and reality.



PASSENGERS



Eyes Wide Open

This movie follows two people, Aurora Lane, played by Jennifer Lawrence, and Jim Preston, played by Chris Pratt, on a long space journey to a distant colony. During the trip, they unexpectedly wake up early from hibernation, facing the challenge of being the only ones awake on the massive spaceship. As they navigate their new reality, they form a deep connection and must confront the mysteries and dangers of their journey.



**Rotten
Tomatoes**
AUDIENCE SCORE



THE WOOD CHAIR

MARC NEWSON

In *Passengers*, the inclusion of the wood chair by production designer, Guy Hendrix Dyas, adds a touch of warmth and humanity to the sleek, futuristic setting of the spaceship. This choice creates a comfortable, inviting atmosphere for the characters, contrasting with the cold, sterile environment of the spacecraft. The wood chair serves as a reminder of Earth and the familiar comforts of home, grounding the characters emotionally as they navigate their unique and isolated situation. It helps establish a sense of intimacy and coziness in their surroundings, enhancing the overall visual and emotional impact of the film.

TOM HANKS TIM ALLEN

Disney • PIXAR

Toy
STORY
2



Rotten
Tomatoes
AUDIENCE SCORE



CHERNER ARMCHAIR

NORMAN CHERNER

The inclusion of the Cherner armchair adds a touch of mid-century modern style to the settings, which reflects the nostalgia and charm of the story. Production designer, William Cone, uses the chair's sleek curves and wood construction to create a warm and inviting atmosphere, offering a familiar and cozy backdrop for the toys' adventures.

The wood also resembles the likeness to some features of the toys (Woody's boots) and the other furniture pieces throughout the house. The Cherner armchair complements the film's timeless aesthetic and enhances the scenes with its elegant and distinctive design.



Toy
STORY
2



Andy's Coming!

This fun-loving comfort movie is a heartwarming animated adventure where Woody, Buzz, and the toy gang face new challenges and unexpected discoveries. The film explores themes of friendship and loyalty, blending humor and emotion for an engaging experience for audiences of all ages.

ABOUT THE AUTHOR



Why hello! Fancy seeing you here. I'm Darby Huber, a current junior at the point of writing this, in Auburn University's Interior Design program in the College of Human Sciences. It's thanks to this amazing school and faculty sponsor, Dr. Anna Ruth Gatlin, who have allowed me to create something that exemplifies both my passion for design and side hobby of graphic design. I started making this magazine in May of 2023, as an additional output that came to fruition due to a research fellowship opportunity. The symposium board was titled "Analyzing and Interpreting the Importance of Set Design Choices in Modern Cinema" and from there the entire concept took off. Dr. Gatlin, my faculty sponsor and wonderful professor, had suggested delving into chairs, specifically. To start watching movies and shows with an intent to focus on their choice in set design and how it fits with their respective set. So, the idea for this magazine fully goes to her. I thought, how genius is this? I hadn't seen it done prior,

and a lot of people don't really know about the importance of set design, chairs, history, and precedents (which is just something that came before). I've had a blast from start to finish making this magazine, and to see it finally come to life after almost a year of working on it feels liberating. I hope you enjoy reading and looking through it as much as I did making it.

Thank you,

